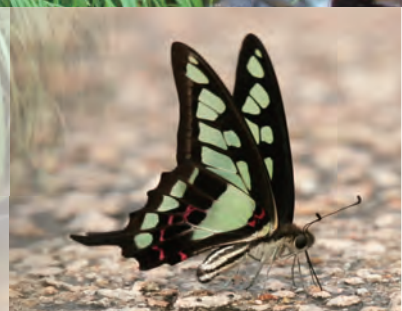


# 郊野公園及海岸公園委員會報告

## Report of the Country and Marine Parks Board

From 1 September 2007 to 31 August 2009

二〇〇七年九月一日至二〇〇九年八月三十一日



# Contents

Content	Page	
<b>Foreword</b>	2	
<b>Chapter ONE</b>		
Introduction	3	
Membership	3	
Transparency of the Board	3	
Meetings and Visits	3	
<b>Chapter TWO</b>		
Committees and working groups of the board	4	
Committees	4	
Working Group / Sub-committee	5	
<b>Chapter THREE</b>		
Work of the board	6	
Proposed Designation of Lantau North (Extension) Country Park	6	
Hong Kong Geopark	7	
Management of Country and Marine Parks	8	
Applications for Works Projects and Special Activities	9	
Project and Development Issues	10	
Work of the Committees and the Authority	13	
Closed-door sessions	13	
Visits and activities	13	
<b>Chapter FOUR</b>		
Work of the committees	15	
Country Parks Committee	15	
Marine Parks Committee	16	
Public Relations Committee	17	
<b>List of Appendices</b>		
Appendix I	Terms of Reference of the Country and Marine Parks Board	18
Appendix II	Membership List of the Country and Marine Parks Board	19
Appendix III	Terms of Reference and Membership List of the Country Parks Committee	21
Appendix IV	Terms of Reference and Membership List of the Marine Parks Committee	23
Appendix V	Terms of Reference and Membership List of the Public Relations Committee	25
Appendix VI	Terms of Reference and Membership List of the Working Group on Fishing Permit	27
Appendix VII	Terms of Reference and Membership List of the Sub-Committee on Educational and Scientific Studies	28

# Foreword

The Country and Marine Parks Board, previously known as the Country Parks Board, was established in 1976 under the Country Parks Ordinance, Cap. 208. Being a consultative body on county and marine parks in Hong Kong, the Board plays an important role in advising the Country and Marine Parks Authority on the designation, conservation and management of the protected areas.

With the support of the Board, the North Lantau (Extension) Country Park was designated during the term 2007 to 2009. It added 2 360 hectares of country park land to Hong Kong. The Board was also consulted on the proposal of Hong Kong Geopark to protect our valuable geological resources and promote geo-science and eco-tourism. I would like to express my gratitude to all the members of the Board and its committees for their unfailing support and valuable advice. Members' advice has been of immense help to the Authority in conserving our beautiful countryside and the implementation of appropriate management plans.

This report records the work of the Board and its Committees from 1 September 2007 to 31 August 2009. I hope that this report will serve as a fair record of the Board's contribution as well as a useful reference for those who wish to understand the functions and operation of the Board.

**Mr. Alan WONG**

Country and Marine Parks Authority

May 2010

# CHAPTER ONE

## INTRODUCTION

---

- 1.1 The Country and Marine Parks Board (the Board) was established in 1976. It is a statutory body established under the Country Parks Ordinance, Cap. 208, to advise the Country and Marine Parks Authority (the Authority) on policies and programmes in respect of existing and proposed Country Parks and Marine Parks. It also performs statutory duties in considering objections lodged under section 11 or section 17 of the Country Parks Ordinance, Cap. 208, and section 12 of the Marine Parks Ordinance, Cap. 476. The terms of reference of the Board are at Appendix I.

### Membership

- 1.2 Section 5 of the Country Parks Ordinance, Cap. 208, provides that the Board shall comprise the Authority and not less than 10 other members of whom not less than five shall be public officers. For the 2007/2009 term (that is, from 1 September 2007 to 31 August 2009), the Board comprised 14 non-official members and eight official members, with a non-official member appointed as the Board Chairman. The membership list is at Appendix II.

### Transparency of the Board

- 1.3 The Board has adopted the following transparency measures:
- (i) Conduct open meetings\*;
  - (ii) Make available for the public the agenda, papers and confirmed minutes of meetings\*; and
  - (iii) Arrange press conferences and press releases when necessary.

\*save for confidential issues

### Meetings and Visits

- 1.4 During the 2007/2009 term, the Board held a total of eight meetings. It also conducted several visits including two field visits on 7 December 2007 and 11 December 2008 respectively.

# CHAPTER TWO

## COMMITTEES AND WORKING GROUPS OF THE BOARD

---

- 2.1 Section 5(7) of the Country Parks Ordinance, Cap. 208, provides that the Board may appoint committees for better discharge of its functions under the Ordinance. A committee so appointed may include persons who are not members of the Board, provided that at least two-thirds of the members of every committee shall be members of the Board.

### Committees

- 2.2 The following three Committees have been established under the Board:
- (i) the Country Parks Committee;
  - (ii) the Marine Parks Committee; and
  - (iii) the Public Relations Committee.

All the above Committees are chaired by non-official members. They meet about three times a year.

- 2.3 The Country Parks Committee advises the Authority on matters relating to the development and management programmes of Country Parks and Special Areas.
- 2.4 The Marine Parks Committee advises the Authority on matters relating to the development and management programmes of Marine Parks and Marine Reserves.
- 2.5 The Public Relations Committee advises the Authority on matters relating to the publicity and public relations programmes for Country Parks, Special Areas, Marine Parks and Marine Reserves.
- 2.6 The membership lists and terms of reference of the three Committees are at Appendices III, IV and V respectively.

## Working Group/Sub-committee

2.7 To handle specific issues, the following working group and sub-committee have been formed:

(a) Working Group on Fishing Permit

This Working Group considers applications and devises criteria for granting fishing permits in Marine Parks and makes recommendations to the Authority.

(b) Sub-Committee on Educational and Scientific Studies

This Sub-committee considers applications for educational and scientific studies in Marine Parks and Marine Reserves and makes recommendations to the Authority.

2.8 The membership lists and terms of reference of the Working Group and Sub-committee are at Appendices VI and VII respectively.

# CHAPTER THREE

## WORK OF THE BOARD

---

- 3.1 During the 2007/2009 term, the Board advised the Authority on the management of Country and Marine Parks and on applications for works projects and special activities within Country and Marine Parks. The Board also advised the Authority on matters relating to territorial planning and specific projects that might affect country and marine parks.

### **Proposed Designation of Lantau North (Extension) Country Park**

- 3.2 The Board was consulted on the proposed designation of Lantau North (Extension) Country Park during the term 2007/2009. The Country Park covers the area to the north, northeast and east of the existing Lantau North Country Park. The 2 360 hectares of land consists of secondary woodlands and freshwater habitats of high conservation and landscape value.

The draft map of the proposed Lantau North (Extension) Country Park was circulated to members for consultation in November 2007. Members had no objection to the proposed designation.

In accordance with the Country Park Ordinance, Cap. 208, the draft map was gazetted on 4 January 2008 for public consultation. An objection from a mountain biker was received. The Board conducted a special meeting on 22 April 2008 to hear the objection.

The Board was of the view that while consideration should be given to designating mountain bike trails on Lantau where appropriate, it should nevertheless be an issue to be dealt with by the Authority separately. Considering that the designation would enable those areas to be properly protected and managed in accordance with the Ordinance, the Board rejected the objection.

The Draft Map together with the objection and the Authority's representations were then submitted to the Chief Executive in Council for decision. The designation order was published in the Gazette on 27 June 2008, and the order came into operation on 7 November 2008.

## Hong Kong Geopark

3.3 In his Policy Address 2008-09, the Chief Executive announced the proposal to set up a geopark in Hong Kong under the framework of the Country Parks Ordinance, Cap. 208 and Marine Parks Ordinance, Cap. 476, with a view to better protecting our geological landscapes and promoting geo-diversity and science popularization. The Board was consulted on the proposal during the 2007/2009 term.

(a) The Proposal to set up a geopark in Hong Kong

The Secretary for the Environment attended the Board meeting on 20 January 2009 to exchange views with members on the proposal to set up a geopark in Hong Kong. Members noted that a feasibility study had identified two regions, the northeastern New Territories and Sai Kung, with unique geological features. It was therefore recommended to set up a geopark to protect the geosites therein. It was also suggested that the proposal would enhance the public awareness towards geo-science and foster the development of eco-tourism in Hong Kong.

Members were briefed on the management, education and publicity work for the proposed Geopark. To further promote the geological features in Hong Kong, the Government was actively preparing a submission to the Ministry of Land and Resources to list the proposed geopark as a national geopark.

(b) The Planning and Management Principles of the Hong Kong Geopark

On 18 June 2009, members were briefed on the planning and management principles of the Hong Kong Geopark, which included five key issues: (1) legal framework for the designation, protection and management of the geopark; (2) management, monitoring, manpower and training; (3) visitor safety, control



and services; (4) education, scientific research and promotion; and (5) infrastructural support. Members agreed to the planning and management principles of the Hong Kong Geopark.

(c) Proposed Boundaries of New Marine Parks

The proposed geopark in Hong Kong would cover some coastal and inter-tidal areas in Northeast New Territories and Sai Kung that possess important geological features. To provide proper protection to these features and adjacent marine ecological resources, the Administration would plan to designate these areas as new marine parks under the Marine Parks Ordinance, Cap. 476. Draft maps and its associated explanatory statements were circulated to members in July 2009, and members were consulted on the proposed boundaries of the five new marine parks, viz, Port Island Marine Park, Sharp Island Marine Park, Shelter Island Marine Park, Outer Port Shelter Marine Park and Ninepin Marine Park.

## **Management of Country and Marine Parks**

- 3.4 The Board discussed the key management issues of the country and marine parks.

### **Control of Dogs in the Hoi Ha Wan Marine Park**

At the meeting on 15 January 2008, the Board was briefed on the proposal to control dog activities in the Hoi Ha Wan Marine Park (HHWMP).

With an increasing number of complaints about nuisance arising from visiting dogs in HHWMP, the Authority recommended imposing control at the main beach (also known as Tung Fung Shek Beach) on every Saturday, Sunday and public holiday from 1000 hours to 1700 hours. Visitors and villagers would not be allowed to bring dogs into the designated area during the specified times, and stray dogs would be caught by the Agriculture, Fisheries and Conservation Department (AFCD).

The Board was of the view that the proposed measures could help streamline the management of HHWMP. While members supported the proposal, they raised concerns on the prohibition time.

The Authority had further consulted Hoi Ha villagers, and an agreement had been reached to fine tune the prohibition time from 1030 hours to 1700 hours. The control measures in the Hoi Ha Wan Marine Park were gazetted on 11 July 2008, and the implementation of the measures became effective on 15 July 2008.

### **Applications for Works Projects and Special Activities**

3.5 Two applications for works projects and special activities to be conducted within Country and Marine Parks were presented to the Board for consideration during the term.

(a) Proposed Equestrian and Education Centre at Lung Ha Wan, Clear Water Bay Country Park

The project proponent attended the Board meeting on 20 May 2008 and presented the proposal to establish an Equestrian and Education Centre (the Centre) on a piece of leased land adjacent to a barbecue site and a kite flying area at Lung Ha Wan within the Clear Water Bay Country Park.

After consideration, the Board had no objection to the proposed setup of the Centre. In response to members' concerns on the design of the Centre, the project proponent was advised to adopt environmentally friendly materials and compatible colour scheme so that the Centre can better blend in with the surrounding environment.

(b) Proposed Renovation Works of the Swire Institute of Marine Science ramp located at Cape D' Aguilar Marine Reserve

At the meeting on 20 May 2008, the Board considered an application from the Swire Institute of Marine Science (SWIMS) of the University of Hong Kong to renovate the existing boat ramp that was worn out. The Board accepted that there was a genuine need to renovate the existing ramp and had raised no objection to the proposed renovation works.

## **Project and Development Issues**

3.6 The Board was consulted on specific projects and territorial development issues which might have implications on Country and Marine Parks.

(a) South East New Territories (SENT) Landfill Extension

The SENT Landfill would be full by around 2012. The Environmental Protection Department (EPD) had therefore proposed to expand the existing landfill by about 50 hectares so that its lifespan may be extended for another six years. The proposed landfill extension option would involve encroaching upon some five hectares of land of the Clear Water Bay Country Park (CWBCP).

The Board was initially consulted on the temporary encroachment in September 2006 and May 2007. In the light of public interest, the Board did not object to the EPD's proposed option of including five hectares of the CWBCP land into the extension of 50 hectares of the SENT Landfill.

Representatives of EPD attended the Board meeting again on 11 September 2008 to introduce the environmental impact assessment (EIA) report of the proposal. At the meeting, members noted that with the implementation of the mitigation measures recommended by the EIA report, the ecological, landscape and visual impacts would be acceptable and meet the relevant requirements under the EIA Ordinance and its Technical Memorandum. EPD also briefed the Board on the Government's long-term waste management strategy. After thorough consideration, the Board was of the

view that although landfilling was not compatible with the use of country park land, the Board was left with no alternative and thus recommended the excision of the proposed encroached area from the approved map of CWBCP by invoking the Country Parks Ordinance, Cap. 208.

The Authority subsequently published the draft map of CWBCP on 14 November 2008 for public inspection. Within the inspection period of 60 days, a total of 3 105 objection letters were received. In March 2009, the Board arranged special sessions for the hearing of objections to the draft map of CWBCP.

The Board carefully considered all the written objections, the opinions of those attending the hearing sessions, representations of the Authority and the explanations of the EPD as the project proponent. After carefully considering all relevant viewpoints, the Board was of the view that, as compared with the option of retaining the land intended for landfill purpose in the country park, it would be more appropriate to excise it from the country park. The Board therefore decided to reject all the objections.

With respect to the objectors' concern, the Board had requested the Administration to implement compensatory or remedial measures to improve the facilities of CWBCP to enhance visitors' enjoyment. The Administration was also requested to actively identify suitable sites in the vicinity of the CWBCP for designation as country parks, to "compensate" for the loss of five hectares of the country park land.

On the other hand, the Board appreciated the feelings of residents living near the landfill and the public's concern on waste treatment. While these issues were outside its terms of reference, the Board had requested EPD to minimize the impact of the landfill on nearby residents and to explore the feasibility of implementing compensatory measures for them. The Administration agreed to keep the Board informed of the progress regularly.

On 18 June 2009, two identified potential sites, Razor Hill and Siu Chik Sha and their suitability for country park designation were introduced to members. After discussion, it was noted that Siu Chek Sha was the better between the two from the management perspective. Given its relatively low conservation and amenity values, it would be more desirable to consider designating in the future the area together with its adjacent restored landfill site as part of CWBCP.

In July 2009, a writ on Judicial Review against the decision of Director of the Agriculture, Fisheries and Conservation (DAFC) and the Board on the replacement of map of the CWBCP had been submitted to the High Court. The Department of Justice had been instructed to act on behalf of the Board and the DAFC as the putative respondents. The application was heard at the High Court on 13 August 2009 before the Honorable Mr. Justice Lam who after hearing submission from Counsel refused to grant leave to the applicant.

(b) Hong Kong Offshore Wind Farm in Southeast Waters

The Board was consulted at its meeting on 18 June 2009 on the proposed offshore wind farm located about 10 km east of Clearwater Bay. In the proposal, 67 number of wind turbines would be installed to generate 200 megawatt of electricity per year accounting for about 1% of Hong Kong's annual power consumption.

The proponent gave a brief account of the Environmental Impact Assessment report for the project. It concluded that the project was in conformity with environmental and conservation requirements and that the impact caused to the neighbouring environment would be minimal and acceptable. Members expressed views over the potential landscape and visual impacts on the Hong Kong Geopark, cost-effectiveness of the project and its impact on fisheries.

## Work of the Committees and the Authority

- 3.7 The Board kept close watch on the work of its committees and discussed their reports at each Board meeting. The Board also regularly reviewed the progress of work and quality of service delivered by the Authority.

### Closed-door sessions

- 3.8 To enhance transparency, Board meetings have been kept open for public attendance since 2000. The Board may conduct closed sessions for matters involving personal, commercial or other issues of confidential nature. During the 2007/2009 term, one closed-door session was conducted. Two special meetings were also held closed-door in April 2008 and March 2009 to hear objections to the proposed map for the North Lantau (Extension) Country Park and draft replacement map for the Clear Water Bay Country Park respectively.

### Visits and activities

- 3.9 Apart from attending Board meetings, members actively participated in visits and activities arranged by the Authority.

(a) Field Visits ( 7 December 2007 and 11 December 2008)

During the 2007/2009 term, two field visits were arranged by the Authority for Board members to familiarize them with the management, development and publicity of country and marine parks.

The first field visit was held on 7 December 2007 with 20 Board members and government representatives taking part. Participants visited the Yan Chau Tong Marine Park and Lai Chi Wo Special Area. Among other things, members were briefed on the management and ranger services provided in county and marine parks, including the provision of recreational facilities and tree conservation, etc.

Some 19 Board members and government representatives joined the second field visit on 11 December 2008. They conducted a dolphin watch in Sha Chau and Lung Kwu Chau Marine Park, inspected the marine development projects in western waters and visited the Tai Tong Management Centre and Nursery. They were briefed about the dolphin monitoring work, seedling production methods and management of country and marine parks.

(b) Songs of Nature Final Contest (2 February 2008)

The contest was jointly organized by the Friends of the Country Parks, Education Bureau and AFCD. It aimed to promote beautiful scenery and enhancing students' understanding of the countryside. Among others, Chairperson of the Public Relations Committee joined the Contest as Judge Panel.

(c) Site Visits to the Hoi Ha Wan Marine Life Centre (28 February 2008)

WWF Hong Kong (WWF) invited Board members and members of the Marine Parks Committee to visit the newly remodeled Hoi Ha Wan Marine Life Centre on 28 February 2008. Members were briefed on WWF's marine conservation work and education work at the Centre, and had an opportunity to see corals on board "Transparency" the WWF's glass bottom tour boat.

(d) Visit to the proposed geosites (9 July 2009)

Board members, joined with members of the Task Force on Hong Kong Geopark, were invited to visit Sharp Island and High Island, two of the eight proposed geosites. Members were briefed on the geological features and the management of the proposed Hong Kong Geopark.

# CHAPTER FOUR

## WORK OF THE COMMITTEES

---

- 4.1 Three committees, viz, the Country Parks Committee, Marine Parks Committee and Public Relations Committee are formed under the Board to assist it in discharging specific duties. A summary of the items discussed at meetings of the three Committees during the 2007/2009 term is listed below.

### Country Parks Committee

#### Management of Country Parks

- (1) Stray Cattle in Country Parks;
- (2) Mountain Bike Activities in Country Parks;
- (3) Illegal felling of Buddhist Pines and Incense Trees;

#### Development Proposals

- (4) Inter-reservoirs Transfer Scheme (IRTS) – Water Tunnel between Kowloon Byewash Reservoir and Lower Shing Mun Reservoir;
- (5) Proposed Land Exchange for Residential Development at Tai Mei Tuk within Plover Cove Country Park;
- (6) Relocation of Cenotaph of the Anti-Japanese Martyrs;

#### Consultation

- (7) Study on Land Use Planning for the Closed Area – Draft Concept Plan;
- (8) Proposal on Hong Kong Geopark;
- (9) Hong Kong Section of Guangzhou-Shenzhen-Hong Kong Express Rail Link – Works in the Vicinity of the Country Parks;

#### Work of the Authority

- (10) The Country and Marine Parks Authority's Progress Reports on Country Parks; and
- (11) Summary of Applications for Development within Country Parks.



## Marine Parks Committee

### Management of Marine Parks and Marine Reserves

- (1) Report on the Coral Recovery at Coral Beach, Hoi Ha Wan Marine Park;
- (2) Fishing Control in Marine Parks;

### Development Proposals and Special Activities

- (3) Small Scale Artificial Reef to be Deployed underneath the WWF Marine Life Centre;
- (4) The Proposed Maintenance Dredging on the Approach Channel and Turning Basin of the AFRF at Sha Chau;

### Studies and Surveys

- (5) Summary Findings of Past Studies on Potential Marine Parks and Marine Reserve;
- (6) Reference Collection and Study on Octocorals and Black Corals in Hong Kong Waters;
- (7) Diversity, Biomass, Abundance and Size of Groupers within Marine Protected Areas in Hong Kong;
- (8) Habitat Use of Indo-pacific Humpback Dolphin (*Sousa chinensis*) in Hong Kong;
- (9) WWF – Poll on Awareness of Marine Conservation;

### Consultation

- (10) Consultation Paper on Sustainable Development of Fisheries;
- (11) Proposed Boundaries of New Marine Parks;

### Work of the Working Group on Fishing Permit and the Authority

- (12) Report of the Working Group on Fishing Permit; and
- (13) The Country and Marine Parks Authority's Progress Reports on Marine Parks and Marine Reserves.

## Public Relations Committee

### Publicity and Public Involvement Activities

- (1) Activities to Celebrate 30th Anniversary of Country Parks;
- (2) Geoconservation Campaign;
- (3) Geo Wonders Hike – Hiking Festival and Guided Tours;
- (4) Hong Kong Wetland Park, Marine Parks, Country Parks E-newsletter;

### Educational Activities and Publications

- (5) Song of Nature Inter-school Music Contest;
- (6) Eye on Nature Series 2008 Publication Plan;
- (7) Country Parks Summer Program – Tree Explorer;

### Nature Appreciation

- (8) Ngong Ping Nature Centre;
- (9) Man Yee Nature Trail;
- (10) Islands Heritage Trail;

### Work of the Authority and the Agriculture, Fisheries and Conservation Department

- (11) Country Parks Visitor Survey 2008;
- (12) Report on Communication, Education and Public Awareness Programme of the Hong Kong Wetland Park;
- (13) Report on Publicity and Media Coverage of Country and Marine Parks Arranged by the AFCD; and
- (14) The Country and Marine Parks Authority's Progress Reports on Country and Marine Parks.

# APPENDIX I

## COUNTRY AND MARINE PARKS BOARD

---

### Terms of Reference

1. To act as a consultative body to advise the Country and Marine Parks Authority (the Authority) upon any matter referred to it by the Authority;
2. To consider and to advise the Authority on the policy and programmes prepared by the Authority in respect of existing and proposed Country Parks, Special Areas, Marine Parks and Marine Reserves; and
3. To consider any objections that may be lodged under section 11 or section 17 of the Country Parks Ordinance, Cap. 208, and section 12 of the Marine Parks Ordinance, Cap. 476.

# APPENDIX II

## COUNTRY AND MARINE PARKS BOARD

---

### Membership List of the Term from 1 September 2007 to 31 August 2009

Chairman Professor Nora TAM Fung-ye, J.P.

Members Dr. Gary ADES  
Ms. Jasminia Kristine CHEUNG  
Ms. Betty HO Siu-fong  
Professor Paul LAM Kwan-sing, J.P.  
Dr. LAW Chi-kwong, S.B.S., J.P.  
Mr. LEUNG Wing-hang  
Mr. LI Sing-chung Matthias  
Mr. LI Yiu-ban, B.B.S., J.P.  
Dr. LO Wing-lok, J.P.  
Mr. Young NG Chun-yeong  
Dr. NG Mee-kam  
Mr. POON Huen-wai  
Hon WONG Yung-kan, S.B.S., J.P.  
Dr. YAU Wing-kwong  
Director of Agriculture, Fisheries and Conservation (Ex-officio)  
Deputy Director of Agriculture, Fisheries and Conservation  
(Alternate member: Assistant Director of Agriculture, Fisheries  
and Conservation (Country and Marine Parks))

Director of Home Affairs

(Alternate member: Assistant Director of Home Affairs (2))

Director of Lands

(Alternate member: Assistant Director of Lands (Estate Management))

Director of Leisure and Cultural Services

(Alternate member: Assistant Director of Leisure and Cultural Services (Leisure Services) 3)

Director of Marine

(Alternate member: Assistant Director of Marine (Port Control))

Director of Planning

(Alternate member: Assistant Director of Planning (New Territories))

Director of Water Supplies

(Alternate member: Assistant Director of Water Supplies (Development))

# APPENDIX III

## COUNTRY PARKS COMMITTEE

---

### Terms of Reference

1. To consider and to advise on proposed areas suitable for development as Country Parks or Special Areas which are referred to the Committee by the Country and Marine Parks Authority (the Authority);
2. To advise on the development and management programmes of Country Parks and Special Areas referred to the Committee by the Authority;
3. To consider and to advise the management of and the control of development in Country Parks and Special Areas and to make recommendations to the Authority on means of improving the management of these areas, including additional or alternative resources required, and other measures; and
4. To consider and to make recommendations on other aspects of planning and management of Country Parks and Special Areas, which may from time to time be referred to the Committee by the Authority and such other areas as the Committee may decide.

**Membership List of the Term  
from 1 September 2007 to 31 August 2009**

**Chairman** Ms. Betty HO Siu-fong

**Members** Dr. Gary ADES  
Ms. Jasminia Kristine CHEUNG  
Mr. LEUNG Wing-hang  
Mr. LI Yiu-ban, B.B.S., J.P.  
Dr. LO Wing-lok, J.P.  
Mr. Young NG Chun-yeong  
Dr. NG Mee-kam  
Mr. POON Huen-wai  
Professor Nora TAM Fung-ye, J.P.  
Hon WONG Yung-kan, S.B.S., J.P.  
Dr. YAU Wing-kwong  
Deputy Director of Agriculture, Fisheries and Conservation  
or his alternate  
Director of Home Affairs or his alternate  
Director of Lands or his alternate  
Director of Leisure and Cultural Services or his alternate  
Director of Planning or his alternate  
Director of Water Supplies or his alternate

**Co-opted Members** Dr. CHEUNG Siu-gin  
Mr. CHAN Hok-fung  
Ms. Vivien CHENG Yu-wai  
Representative of Transport Department

# APPENDIX IV

## MARINE PARKS COMMITTEE

---

### Terms of Reference

1. To consider and to advise on proposed areas suitable for development as Marine Parks or Marine Reserves which are referred to the Committee by the Country and Marine Parks Authority (the Authority);
2. To advise on the development and management programmes of Marine Parks and Marine Reserves referred to the Committee by the Authority;
3. To consider and to advise the management of and the control of development in Marine Parks and Marine Reserves and to make recommendations to the Authority on means of improving the management of these areas, including additional or alternative resources required, and other measures; and
4. To consider and to make recommendations on other aspects of planning and management of Marine Parks and Marine Reserves, which may from time to time be referred to the Committee by the Authority and such other areas as the Committee may decide.



**Membership List of the Term  
from 1 September 2007 to 31 August 2009**

**Chairman** Professor Paul LAM Kwan-sing, J.P.

**Members** Ms. Jasminia Kristine CHEUNG

Ms. Betty HO Siu-fong

Mr. LI Sing-chung Matthias

Mr. LI Yiu-ban, B.B.S., J.P.

Mr. POON Huen-wai

Hon WONG Yung-kan, S.B.S., J.P.

Deputy Director of Agriculture, Fisheries and Conservation  
or his alternate

Director of Home Affairs or his alternate

Director of Lands or his alternate

Director of Leisure and Cultural Services or his alternate

Director of Marine or his alternate

Director of Planning or his alternate

**Co-opted Members** Mr. Eric A BOHM

Mr. CHAN Chi-mang

Mr. Paul HODGSON

Representative of Environmental Protection  
Department

Representative of Marine Police

# APPENDIX V

## PUBLIC RELATIONS COMMITTEE

---

### Terms of Reference

1. To advise the Country and Marine Parks Authority (the Authority) on publicity for Country Parks, Special Areas, Marine Parks and Marine Reserves (Parks and Reserves) so that by appropriate means the public may be informed of their purpose, location, extent, facilities provided and their general benefit to the community;
2. To advise the Authority on matters relating to publicity for the promotion of the conservation of flora, fauna, habitats, landscape and seascape with special reference to parks and reserves;
3. To advise the Authority on means of encouraging the careful and responsible use of parks and reserves by visitors through education, information and similar activities;
4. To advise the Authority on the exchange of information and experience with responsible organizations in Hong Kong and similar authorities in other countries; and
5. To consider and advise on any other matters relating to publicity and public relations as may from time to time be referred to the Committee by the Authority.

**Membership List of the Term  
from 1 September 2007 to 31 August 2009**

**Chairman** Mr. LI Sing-chung Matthias

**Members** Ms. Jasminia Kristine CHEUNG

Dr. LAW Chi-kwong, S.B.S., J.P.

Mr. LEUNG Wing-hang

Dr. LO Wing-lok, J.P.

Mr. Young NG Chun-yeong

Mr. POON Huen-wai

Dr. YAU Wing-kwong

Deputy Director of Agriculture, Fisheries and Conservation or  
his alternate

**Co-opted Members** Mr. Stephen CHAN Chit-kwai, J.P.

Mr. CHOW Kwok-keung

Representative of Friends of the Country Parks

# APPENDIX VI

## WORKING GROUP ON FISHING PERMIT

---

### Terms of Reference

1. To consider the criteria and guidelines in issuing and renewal of fishing permits;
2. To consider doubtful cases on application or renewal of fishing permits;
3. To review the criteria and guidelines periodically and recommend to the Country and Marine Parks Authority on amendments to the criteria and guidelines; and
4. To report the Marine Parks Committee and the Country and Marine Parks Board on the progress of the Working Group.

### Membership List of the Term from 1 September 2007 to 31 August 2009

**Chairman** Assistant Director (Country and Marine Parks), Agriculture,  
Fisheries and Conservation Department (AFCD)

**Members** Mr. Eric A BOHM  
Mr. LI Sing-chung Matthias  
Hon WONG Yung-kan, S.B.S., J.P.  
Senior Fisheries Officer/Fisheries Management, AFCD  
Senior Marine Parks Officer, AFCD

**Secretary** Marine Parks Officer/Development, AFCD

# APPENDIX VII

## SUB-COMMITTEE ON EDUCATIONAL AND SCIENTIFIC STUDIES

---

### Terms of Reference

1. To consider applications for scientific studies and research and to determine whether the applications comply with the guidelines agreed by the Country and Marine Parks Board;
2. To recommend to the Country and Marine Parks Authority on the issue of permits, with appropriate conditions to the proposed studies and research in compliance with the guidelines agreed by the Country and Marine Parks Board;
3. To refer doubtful cases, or cases that do not comply with the guidelines, to the Country and Marine Parks Board for consideration and advice;
4. To review the guidelines periodically and recommend to the Country and Marine Parks Board on amendments to the guidelines; and
5. To report regularly to the Marine Parks Committee and the Country and Marine Parks Board on the progress of the Sub-committee.

### Membership List of the Term from 1 September 2007 to 31 August 2009

Chairman Professor Nora TAM Fung-ye, J.P.

Members Professor Paul LAM Kwan-sing, J.P.

Dr. YAU Wing-kwong

Secretary Marine Parks Officer/Development, AFCD

# 郊野公園及海岸公園委員會 The Country and Marine Parks Board



郊野公園及海岸公園委員會的委員在二〇〇八年十二月十一日的考察活動中合照  
Members of the Country and Marine Parks Board during a Field Visit  
held on 11 December 2008

**前排由左至右Front row, from left to right:**

譚可盈女士\*、李耀斌先生, BBS, JP、潘萱蔚先生、梁榮亨先生、張珧于女士、艾加里博士、  
勞永樂醫生, JP、譚鳳儀教授, JP、沈振雄先生、湯煥銘先生\*、鄧智良先生\*、李潛穎女士\*  
Miss Helen TAM\*, Mr. LI Yiu-ban, B.B.S., J.P., Mr. POON Huen-wai, Mr. LEUNG Wing-hang,  
Ms. Jasminia CHEUNG, Dr. Gary ADES, Dr. LO Wing-lok, J.P., Professor Nora TAM Fung-yeet, J.P.,  
Mr. Joseph SHAM, Mr. Martin TONG\*, Mr. Vincent TANG\*, Miss Vivien LI\*

**缺席者Absent members:**

何小芳女士、林群聲教授, JP、羅致光博士, SBS, JP、李繩宗先生、吳振揚先生、伍美琴博士、  
黃容根議員, SBS, JP、邱榮光博士、張少卿女士, JP、曾裕彤先生, JP、丘國賢先生, JP、陳佩儀女士、  
冼德祥先生、蘇應亮先生、吳孟冬先生  
Ms. Betty HO, Professor Paul LAM Kwan-sing, J.P., Dr. LAW Chi-kwong, S.B.S., J.P.,  
Mr. LI Sing-chung Matthias, Mr. Young NG Chun-yeong, Dr. NG Mee-kam,  
Hon WONG Yung-kan, S.B.S., J.P., Dr. YAU Wing-kwong, Miss CHEUNG Siu-hing, J.P., Mr. Andrew  
TSANG Yue-tung, J.P., Mr. Eddy YAU Kwok-yin, J.P., Ms. Karen CHAN Pui-yeet, Mr. SIN Tak-cheung,  
Mr. Wilson SO Ying-leung, Mr. Bobby NG Mang-tung

\*非委員Non-members

# 郊野公園委員會 The Country Parks Committee



郊野公園委員會的委員在二〇〇九年八月六日的會議上合照  
Members of the Country Parks Committee at a meeting held on 6 August 2009

**前排由左至右 Front row, from left to right:**

楊柳菁博士\*、魏遠娥女士\*、邱榮光博士、沈振雄先生、何小芳女士(主席)、潘萱蔚先生、吳振揚先生、伍美琴博士、鄭茹蕙女士、譚可盈女士\*

Dr. Maria YOUNG\*, Ms. NGAR Yuen-ngor\*, Dr. YAU Wing-kwong, Mr. Joseph SHAM, Ms. Betty HO Siu-fong (Chairman), Mr. POON Huen-wai, Mr. Young NG Chun-yeong, Dr. NG Mee-kam, Ms. Vivien CHENG Yu-wai, Miss Helen TAM\*

**後排由左至右 Rear row, from left to right:**

吳國恩先生\*、周志文先生、莫景光先生\*、湯煥銘先生、何黃雅喬女士、陳清揚先生、任志輝先生、張肇堅博士、艾加里博士、李耀斌先生, BBS, JP、勞永樂醫生, JP、梁榮亨先生、陳學峰先生

Mr. Franco NG\*, Mr. Alfred CHOW Chi-man, Mr. Dennis MOK\*, Mr. Martin TONG Woon-ming, Mrs. Ann HO WONG Nga-kiu, Mr. Philip CHAN Ching-yeung, Mr. Charles YUM Chi-fai, Dr. CHEUNG Siu-gin, Dr. Gary ADES, Mr. LI Yiu-ban, B.B.S., J.P., Dr. LO Wing-lok, J.P., Mr. LEUNG Wing-hang, Mr. CHAN Hok-fung

**缺席者 Absent members:**

譚鳳儀教授, JP、張珧于女士、黃容根議員, SBS, JP、吳錦嫻女士

Professor Nora TAM Fung-ye, J.P., Ms. Jasminia CHEUNG, Hon WONG Yung-kan, S.B.S., J.P., Ms. NG Kam-han

\* 非委員 Non-members

# 海岸公園委員會 The Marine Parks Committee



海岸公園委員會的委員在二〇〇九年七月十六日的會議上合照  
Members of the Marine Parks Committee at a meeting held on 16 July 2009

**前排由左至右 Front row, from left to right:**

譚可盈女士\*、李善昌先生、郭保羅先生、沈振雄先生、林群聲教授, JP (主席)、何小芳女士、  
潘萱蔚先生、龐毅理先生

Miss Helen TAM\*, Mr. Joseph LI, Mr. Paul HODGSON, Mr. Joseph SHAM,  
Professor Paul LAM Kwan-sing, J.P. (Chairman), Ms. Betty HO Siu-fong, Mr. POON Huen-wai,  
Mr. Eric A BOHM

**後排由左至右 Rear row, from left to right:**

林德強先生、蘇應亮先生、周志文先生、郭梓強先生\*、何黃雅喬女士、劉柏輝先生\*、倫翠婉女士\*、  
陳乃觀先生\*、梁劍峰博士、王卓基先生\*

Mr. Frankie LAM Tak-keung, Mr. Wilson SO Ying-leung, Mr. Alfred CHOW Chi-man,  
Mr. Alex KWOK\*, Mrs. Ann HO WONG Nga-kiu, Mr. Patrick LAU\*, Miss Janice LUN\*,  
Mr. Alan CHAN\*, Dr. LEUNG Kim-fung, Mr. Edward WONG\*

**缺席者 Absent members:**

李耀斌先生, BBS, JP、張珧于女士、黃容根議員, SBS, JP、陳志明先生、李繩宗先生、鄭可禮先生  
Mr. LI Yiu-ban, B.B.S., J.P., Ms. Jasminia CHEUNG, Hon WONG Yung-kan, S.B.S., J.P.,  
Mr. CHAN Chi-mang, Mr. LI Sing-chung Matthias, Mr. Simon CHENG Ho-lai

\*非委員 Non-members



# 公共關係委員會

## The Public Relations Committee



公共關係委員會的委員在二〇〇九年六月二十六日的會議上合照  
Members of the Public Relations Committee at a meeting held on 26 June 2009

**前排由左至右 Front row, from left to right:**

陳捷貴先生, JP、邱榮光博士、沈振雄先生、李繩宗先生 (主席)、勞永樂醫生, JP、潘萱蔚先生、周國強先生

Mr. Stephen CHAN Chit-kwai, J.P., Dr. YAU Wing-kwong, Mr. Joseph SHAM, Mr. LI Sing-chung Matthias (Chairman), Dr. LO Wing-lok, J.P., Mr. POON Huen-wai, Mr. CHOW Kwok-keung

**後排由左至右 Rear row, from left to right:**

馬嘉慧女士\*、李英銘先生\*、王卓基先生\*、林銳芳先生\*、譚可盈女士\*、江珮欣女士\*

Miss Carrie MA\*, Mr. LEE Ying-ming\*, Mr. Edward WONG\*, Mr. Edmond LAM\*, Miss Helen TAM\*, Miss Sally KONG\*

**缺席者 Absent members:**

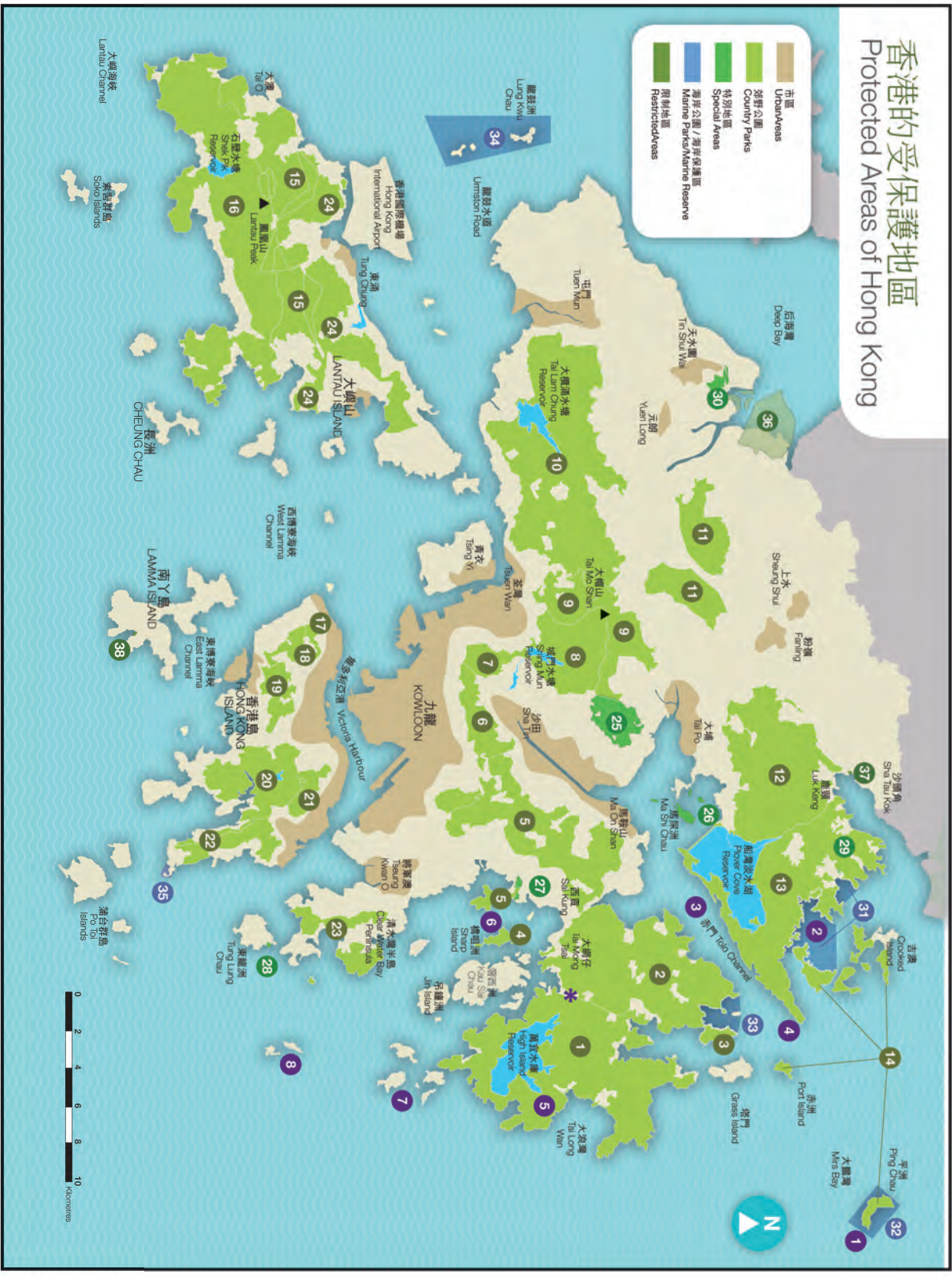
梁榮亨先生、張昭于女士、羅致光博士, SBS, JP、吳振揚先生、許招賢先生, BBS, CPM

Mr. LEUNG Wing-hang, Ms. Jasminia CHEUNG, Dr. LAW Chi-kwong, S.B.S., J.P., Mr. Young NG Chun-yeong, Mr. John HUI, B.B.S., C.P.M.

\* 非委員 Non-members

# 香港的受保護地區 Protected Areas of Hong Kong

市區  
 郊野公園  
 特別地區  
 海岸公園/海岸保護區  
 限制地區  
 限制地區



- 1 西貢郊野公園  
Sai Kung Country Park
- 2 西貢西郊野公園 (灣仔擴建部分)  
Sai Kung West Country Park (Wan Tsai Extension)
- 3 西貢東郊野公園  
Sai Kung East Country Park
- 4 大嶼山郊野公園  
Tai Lam Country Park
- 5 沙頭角郊野公園  
Sha Tin Country Park
- 6 獅子山郊野公園  
Lion Rock Country Park
- 7 金山郊野公園  
Kam Shan Country Park
- 8 城門郊野公園  
Kam Tin Country Park
- 9 大嶼山郊野公園  
Tai Lam Country Park
- 10 大嶼山郊野公園  
Tai Lam Country Park
- 11 林村郊野公園  
Lin Tin Country Park
- 12 林村郊野公園  
Lin Tin Country Park
- 13 八仙郊野公園  
Pai Hsin Country Park
- 14 八仙郊野公園  
Pai Hsin Country Park
- 15 粉嶺郊野公園  
Fung Ling Country Park
- 16 粉嶺郊野公園  
Fung Ling Country Park
- 17 粉嶺郊野公園  
Fung Ling Country Park
- 18 粉嶺郊野公園  
Fung Ling Country Park
- 19 粉嶺郊野公園  
Fung Ling Country Park
- 20 粉嶺郊野公園  
Fung Ling Country Park
- 21 粉嶺郊野公園  
Fung Ling Country Park
- 22 粉嶺郊野公園  
Fung Ling Country Park
- 23 粉嶺郊野公園  
Fung Ling Country Park
- 24 粉嶺郊野公園  
Fung Ling Country Park
- 25 粉嶺郊野公園  
Fung Ling Country Park
- 26 粉嶺郊野公園  
Fung Ling Country Park
- 27 粉嶺郊野公園  
Fung Ling Country Park
- 28 粉嶺郊野公園  
Fung Ling Country Park
- 29 粉嶺郊野公園  
Fung Ling Country Park
- 30 粉嶺郊野公園  
Fung Ling Country Park
- 31 粉嶺郊野公園  
Fung Ling Country Park
- 32 粉嶺郊野公園  
Fung Ling Country Park
- 33 粉嶺郊野公園  
Fung Ling Country Park
- 34 粉嶺郊野公園  
Fung Ling Country Park
- 35 粉嶺郊野公園  
Fung Ling Country Park
- 36 粉嶺郊野公園  
Fung Ling Country Park
- 37 粉嶺郊野公園  
Fung Ling Country Park
- 38 粉嶺郊野公園  
Fung Ling Country Park
- 39 粉嶺郊野公園  
Fung Ling Country Park

This is a copyright material. Any use or reproduction will require written consent of the Agriculture, Fisheries and Conservation Department. 此地圖之版權由漁農自然護理署擁有，未經許可，不得轉載或應用。