

COUNTRY AND MARINE PARKS BOARD

Enhancement of Hiking Trails for Promotion of Green Tourism

1. Purpose

1.1 This paper aims to brief Members on the progress of the Enhancement of Hiking Trails project in country parks for promoting green tourism in collaboration with the Tourism Commission (TC).

2. Background

2.1 The Chief Executive's 2017 Policy Address set a clear vision and mission to develop Hong Kong into a world-class tourism destination with a view to ensuring a balanced, healthy and sustainable development of the industry. In tandem, TC published the "Development Blueprint for Hong Kong's Tourism Industry" in 2017 which set out the development strategies and implementation goals for tourism development, including green tourism.

2.2 In the 2018-19 Budget, the Government earmarked an annual funding of \$15 million from 2018-19 to 2022-23 for implementation of the Enhancement of Hiking Trails - Phase I to enhance the tourism supporting facilities of 10 popular hiking trails with tourism appeal potential within country parks. The 10 hiking trails selected for enhancement in Phase I include:

- (i) MacLehose Trail Section 1(Sai Kung East Country Park)
- (ii) Peak Trail (Pok Fu Lam Country Park)
- (iii) Double Heaven Country Trail (Plover Cove Country Park)
- (iv) Dragon's Back (Shek O Country Park)
- (v) Shing Mun Reservoir Walk (Shing Mun Country Park)
- (vi) Lantau Trail Section 2 (Lantau South Country Park)
- (vii) MacLehose Trail Section 4 (Ma On Shan Country Park)
- (viii) Wilson Trail Stage 2 (Tai Tam Country Park and Tai Tam Country Park (Quarry Bay Extension))

- (ix) Sharp Island Country Trail (Kiu Tsui Country Park)
- (x) Lau Shui Heung to Hok Tau Twin Reservoir Walk (Pat Sin Leng Country Park)

2.3 These 10 hiking trails are featured with views of lush greenery and rugged coastlines of country parks, locations of ecological, geological and cultural interests, and panoramic cityscape of the town. The Country Parks Committee was consulted on the Phase I enhancement plan at its meeting on 20 September 2018. Members of the Committee were generally supportive to the enhancement works.

2.4 To further enrich green tourism resources, the Government has earmarked \$55 million for taking forward the Enhancement of Hiking Trails - Phase II from 2021-22 to 2025-26. Apart from the various interesting features mentioned for Phase I projects in paragraph 2.3, the Phase II project will also have perspectives on the war relics and cultural elements of Hong Kong within country parks. The 10 hiking trails to be enhanced in Phase II include:

- (i) Sweet Gum Woods to Wong Nai Tun Reservoir (Tai Lam Country Park)
- (ii) Lion Rock Historic Walk (Lion Rock Country Park)
- (iii) Wang Tsat Ancient Trail (Pat Sin Leng Country Park)
- (iv) Aberdeen Reservoirs Walk (Aberdeen Country Park)
- (v) Shek Lung Kung to Lin Fa Shan Historic Walk (Tai Lam Country Park)
- (vi) Lantau Trail Section 3 (Lantau South Country Park)
- (vii) Shing Mun Historic Walk (Shing Mun Country Park)
- (viii) Tai To Yan (Lam Tsuen Country Park)
- (ix) Pak Tam Chung to Tai Tun (Sai Kung West Country Park)
- (x) Luk Keng War Relics Trail (Pat Sin Leng Country Park)

The locations of the 20 selected hiking trails under Phase I and II enhancement projects are set out in **Annex**.

3. Scope of Works and Progress

3.1 To upgrade the standard of the hiking trails selected for Phase I project, the AFCD has carried out a wide range of improvement works, including the improvement of existing trail network, control of soil erosion at vulnerable locations, improvement of vegetation cover, addition of lookout points and enrichment of visitor information at

strategic locations. The enhancement works of Phase I were implemented by phases. Most of the works are substantially completed, and the overall completion of Phase 1 is expected by Q4 2022.

3.2 Apart from the improvement of facilities, the AFCD has also launched the enhanced Enjoy Hiking thematic website which serves as an important promotional platform of hiking trails and green attractions in country parks that aims to enrich visitors' experience. Since it was launched, the website received more than 2.65 million pageviews. In addition, the trails are enriched with illustrated maps, park signs and interpretation panels adopting consistent and aesthetic design, with a view to delivering visitor and educational information more effectively. The attractive illustrated maps were particularly well received by the public.

3.3 In summary, AFCD has improved approximately 76 km of hiking trails under Phase I, for which natural materials and hand tools were mostly used. Among these 10 hiking trails, a total of about 20 lookout points were either improved or newly constructed. Panoramic view-compasses were installed in strategic locations to showcase the diverse landscapes of Hong Kong. Some of the lookout points, such as those at High West, Dragon's Back and Sunset Peak, become very popular checkpoints for visitors.

3.4 The Phase II enhancement project would take an approach similar to that of Phase I. We have just started the preparation for the Phase II enhancement project. With due regard to the dual roles of the country parks in recreation and nature conservation, the AFCD will ensure that the enhancement works would blend in with the natural settings and minimize impacts on the natural environment of country parks. If necessary, the AFCD will seek advice from the Country and Marine Parks Board or its Country Parks Committee in respect of particular enhancement works.

4. Advice Sought

4.1 Members are invited to comment on the Enhancement of Hiking Trails Project.

Country and Marine Parks Authority
Agriculture, Fisheries and Conservation Department
September 2021

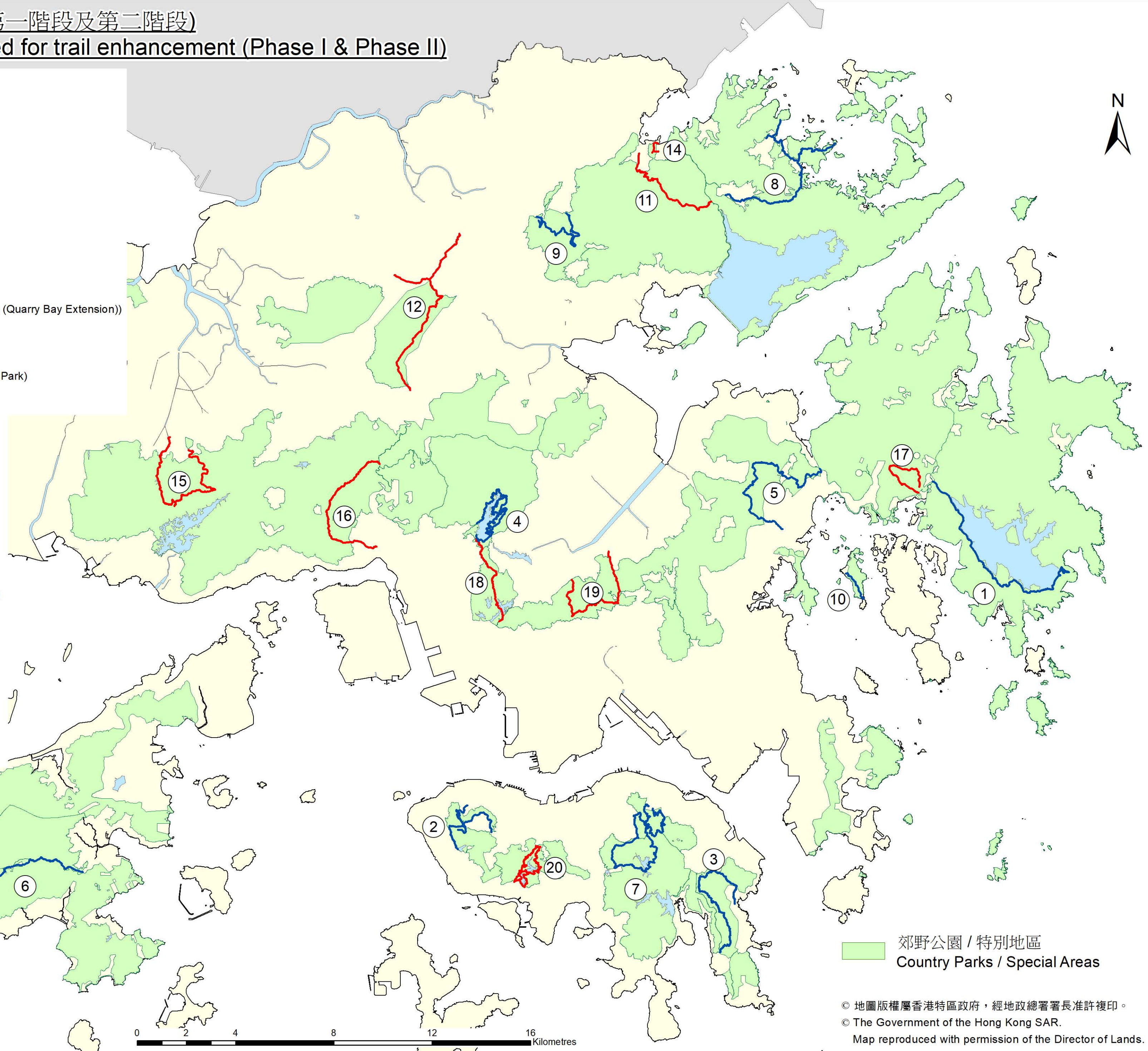
已選定進行路徑改善的遠足徑位置圖 (第一階段及第二階段)
 The locations of the hiking trails selected for trail enhancement (Phase I & Phase II)

第一階段選定之遠足徑 Phase I selected Hiking Trails

- ① 麥理浩徑第一段(西貢東郊野公園)
MacLehose Trail Section 1 (Sai Kung East Country Park)
- ② 山頂爐峰自然步道(薄扶林郊野公園及龍虎山郊野公園)
Peak Trail (Pok Fu Lam Country Park and Lung Fu Shan Country Park)
- ③ 龍脊(石澳郊野公園)
Dragon's Back (Shek O Country Park)
- ④ 城門畔塘徑(城門郊野公園)
Shing Mun Reservoir Walk (Shing Mun Country Park)
- ⑤ 麥理浩徑第四段(馬鞍山郊野公園)
MacLehose Trail Section 4 (Ma On Shan Country Park)
- ⑥ 鳳凰徑第二段(南大嶼郊野公園)
Lantau Trail Section 2 (Lantau South Country Park)
- ⑦ 衛奕信徑第二段(大潭郊野公園及大潭郊野公園(鯽魚涌擴建部分))
Wilson Trail Section 2 (Tai Tam Country Park and Tai Tam Country Park (Quarry Bay Extension))
- ⑧ 印洲塘郊遊徑(船灣郊野公園)
Double Haven Country Trail (Plover Cove Country Park)
- ⑨ 流水響至鶴藪雙塘徑(八仙嶺郊野公園)
Lau Shui Heung to Hok Tau Twin Reservoir Walk (Pat Sin Leng Country Park)
- ⑩ 橋咀郊遊徑(橋咀郊野公園)
Sharp Island Country Trail (Kiu Tsui Country Park)

第二階段選定之遠足徑 Phase II selected Hiking Trails

- ⑪ 橫七古道(八仙嶺郊野公園)
Wang Tsat Ancient Trail (Pat Sin Leng Country Park)
- ⑫ 大刀坳(林村郊野公園)
Tai To Yan (Lam Tsuen Country Park)
- ⑬ 鳳凰徑第三段(南大嶼郊野公園)
Lantau Trail Section 3 (Lantau South Country Park)
- ⑭ 戰地遺跡徑 - 鹿頸(八仙嶺郊野公園)
Luk Keng War Relics Trail (Pat Sin Leng Country Park)
- ⑮ 楓香林至黃泥墩水塘(大欖郊野公園)
Sweet Gum Woods to Wong Nai Tung Reservoir (Tai Lam Country Park)
- ⑯ 石龍拱至蓮花山歷史徑(大欖郊野公園)
Shek Lung Kung - Lin Fa Shan Historic Walk (Tai Lam Country Park)
- ⑰ 北潭涌至太墩(西貢西郊野公園)
Pak Tam Chung to Tai Tun (Sai Kung West Country Park)
- ⑱ 城門歷史徑(城門郊野公園)
Shing Mun Historic Walk (Shing Mun Country Park)
- ⑲ 獅子山歷史徑(獅子山郊野公園)
Lion Rock Historic Walk (Lion Rock Country Park)
- ⑳ 香港仔畔塘徑(香港仔郊野公園)
Aberdeen Reservoirs Walk (Aberdeen Country Park)



郊野公園 / 特別地區
Country Parks / Special Areas

© 地圖版權屬香港特區政府，經地政總署署長准許複印。
 © The Government of the Hong Kong SAR.
 Map reproduced with permission of the Director of Lands.

