

Genetically Modified Organisms (Control of Release) Ordinance

(Cap. 607) is now in effect



Genetically Modified Cut Flowers are Regulated

Enquiries

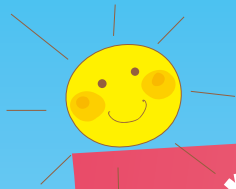
Biodiversity Conservation Division
Agriculture, Fisheries and Conservation Department
Tel.: 2150 6947 Fax.: 2314 2802
GMOs Register: <http://www.afcd.gov.hk/gmo>



漁農自然護理署
Agriculture, Fisheries and
Conservation Department

Genetically Modified Organisms (Control of Release) Ordinance,
Cap. 607, is now in effect
Genetically Modified Cut Flowers are regulated

Enquiries:
Biodiversity Conservation Division
Agriculture, Fisheries and Conservation Department
Tel.: 2150 6947 Fax: 2314 2802
GMOs Register: <http://www.afcd.gov.hk/gmo>



對你有何影響？ How you are affected?

根據有關法例，任何人若明知而向環境釋出未獲核准的基因改造鮮花（例如藍色基因改造康乃馨及藍色基因改造玫瑰），即屬違法。

Under the Ordinance, any person who knowingly releases unapproved genetically modified (GM) cut flowers (e.g. blue GM carnation and blue GM rose) into the environment commits an offense.

FLOWER SHOP 花店

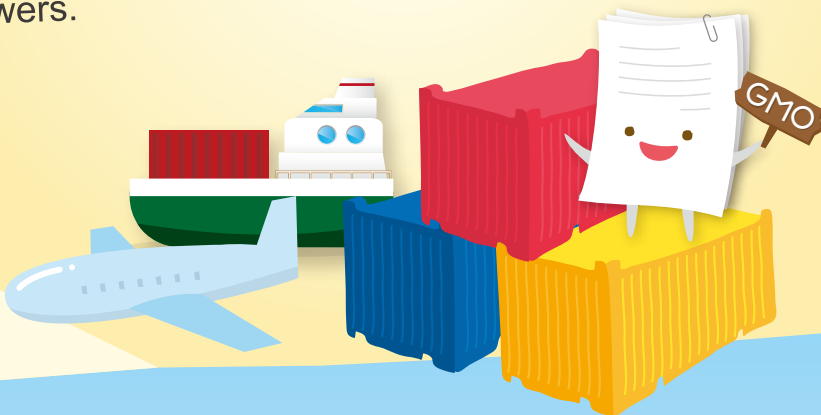


對你有何影響？ How you are affected?

根據有關法例，任何人若明知而向環境釋出未獲核准的基因改造鮮花（例如紫色或藍色基因改造康乃馨及紫色或藍色基因改造玫瑰），即屬違法。

Under the Ordinance, any person who knowingly releases unapproved genetically modified (GM) cut flowers (e.g. violet or blue GM carnation and violet or blue GM rose) into the environment commits an offense.

在進口或出口基因改造鮮花時，供應商需符合文件規定。
Traders should comply with the documentation requirements when importing or exporting GM cut flowers.



擬進口作圍封使用 (例如擺放在設有有效措施以防止花粉逃逸到開放環境的室內) 的基因改造鮮花，不需要申請事先核准。

Prior approval is not required if the GM cut flowers are imported for contained use, such as being displayed inside an indoor environment with measures to effectively prevent the escape of their pollen into the open environment.



在進口或出口基因改造鮮花時，供應商需符合文件規定。

Traders should comply with the documentation requirements when importing or exporting GM cut flowers.

擬進口作圍封使用(例如擺放在設有有效措施以防止花粉逃逸到開放環境的室內)的基因改造鮮花，不需要申請事先核准。

Prior approval is not required if the GM cut flowers are imported for contained use, such as being displayed inside an indoor environment with measures to effectively prevent the escape of their pollen into the open environment.