

# Genetically Modified Organisms (Control of Release) Ordinance

(Cap. 607) is now in effect



## Genetically Modified Organisms in Research Institutes and Laboratories are Regulated

### Enquiries

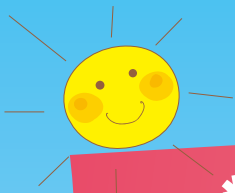
Biodiversity Conservation Division  
Agriculture, Fisheries and Conservation Department  
Tel.: 2150 6947 Fax.: 2314 2802  
GMOs Register: <http://www.afcd.gov.hk/gmo>



漁農自然護理署  
Agriculture, Fisheries and  
Conservation Department

Genetically Modified Organisms (Control of Release) Ordinance,  
Cap. 607, is now in effect  
Genetically Modified Organisms in Research Institutes and  
Laboratories are regulated.

Enquiries:  
Biodiversity Conservation Division  
Agriculture, Fisheries and Conservation Department  
Tel.: 2150 6947 Fax: 2314 2802  
GMOs Register: <http://www.afcd.gov.hk/gmo>



# 對你有何影響？ How you are affected?

根據有關法例，任何人若明知而向環境釋出未獲核准的基因改造生物（例如在開放田地作基因改造作物的種植試驗），即屬違法。

Under the Ordinance, any person who knowingly releases an unapproved genetically modified organism (GMO) into the environment, such as a field trial of GM plant in an open field, commits an offense.



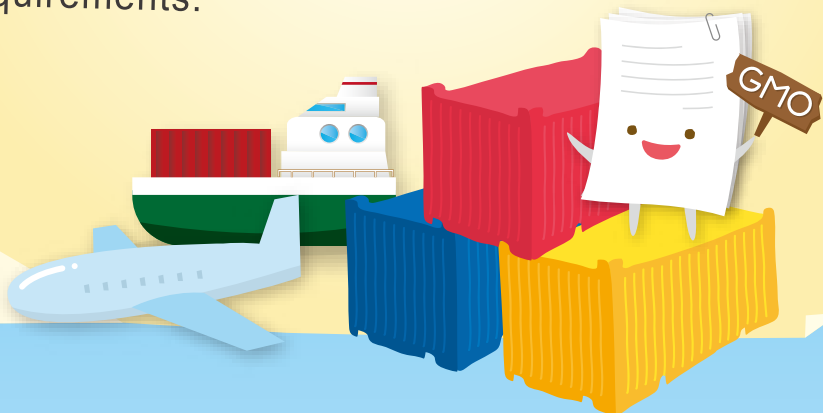
## 對你有何影響？ How you are affected?

根據有關法例，任何人若明知而向環境釋出未獲核准的基因改造生物（例如在開放田地作基因改造作物的種植試驗），即屬違法。

Under the Ordinance, any person who knowingly releases an unapproved genetically modified organism (GMO) into the environment, such as a field trial of GM plant in an open field, commits an offense.

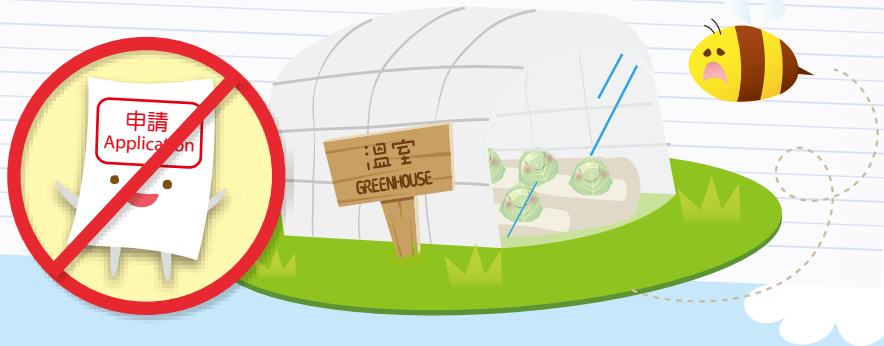
在進出口作圍封使用的基因改造生物時，需符合文件規定。

The import and export of GMOs for contained use should comply with the documentation requirements.



作圍封使用的基因改造生物，例如在設有有效措施以防止花粉逃逸到開放環境中的溫室內種植基因改造作物，不需要申請事先核准。

Prior approval is not required for the contained use of GMOs, such as cultivating GM plants in a greenhouse with measures to effectively prevent the escape of their pollen into the open environment.



在進出口作圍封使用的基因改造生物時，需符合文件規定。

The import and export of GMOs for contained use should comply with the documentation requirements.

作圍封使用的基因改造生物，例如在設有有效措施以防止花粉逃逸到開放環境中的溫室內種植基因改造作物，不需要申請事先核准。

Prior approval is not required for the contained use of GMOs, such as cultivating GM plants in a greenhouse with measures to effectively prevent the escape of their pollen into the open environment.