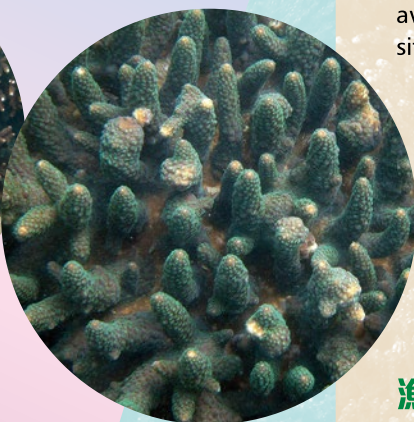


船錨對珊瑚造成的威脅

- 船錨和鐵鏈拋放在珊瑚上或在其上拖行
- 船隻在風向改變或潮退時擱淺
- 錨鏈或繩索纏繞珊瑚，令珊瑚折斷

Anchor threat to the coral

- A vessel's anchor and chain dropping or dragging on coral
- A vessel grounding when the wind changes or the tide ebbs
- A chain or rope wrapping around coral and breaking pieces off



Functions of the "No-anchoring area"

To protect corals, "No-anchoring area" can be used as an indicator for the vessel operator to avoid anchoring their boats inside the "No-anchoring area". To remind operator of vessels with considerable size not to enter the "No-anchoring area" and avoid sailing over any shallow coral area, as this may cause groundings, damage large area of corals and the vessel itself. Also remind the divers and snorkelers, to observe and follow the best environmental practices when visiting the coral sites where this area is with high coral coverage. Novice SCUBA divers who do not have good buoyancy control skill should also avoid diving at coral sites.



"不宜碇泊區" 功用

為保護珊瑚，"不宜碇泊區" 作用能有效提醒駕駛船隻人士應避免在"不宜碇泊區" 內下錨停泊。提醒駕駛船隻體型較大的人士應避免駛進"不宜碇泊區" 或其他淺水珊瑚區以免造成擱淺、損毀珊瑚及船身。能提醒水肺和徒手潛水人士該處為珊瑚區，請遵守海洋護理守則，初學水肺潛水的人士，若未能純熟控制浮力，亦應避免在珊瑚區進行潛水活動。



漁護署工作

監察珊瑚標誌浮標的效用，並且透過宣傳教育，推廣"不宜碇泊區" 的設立和功能。

Work of AFCD

Monitor the effectiveness of the coral marker buoys and promote the existence and functions of the "No-anchoring area" through education and publicity.

漁農自然護理署 二零一五年六月
Agriculture, Fisheries and Conservation Department
June 2015

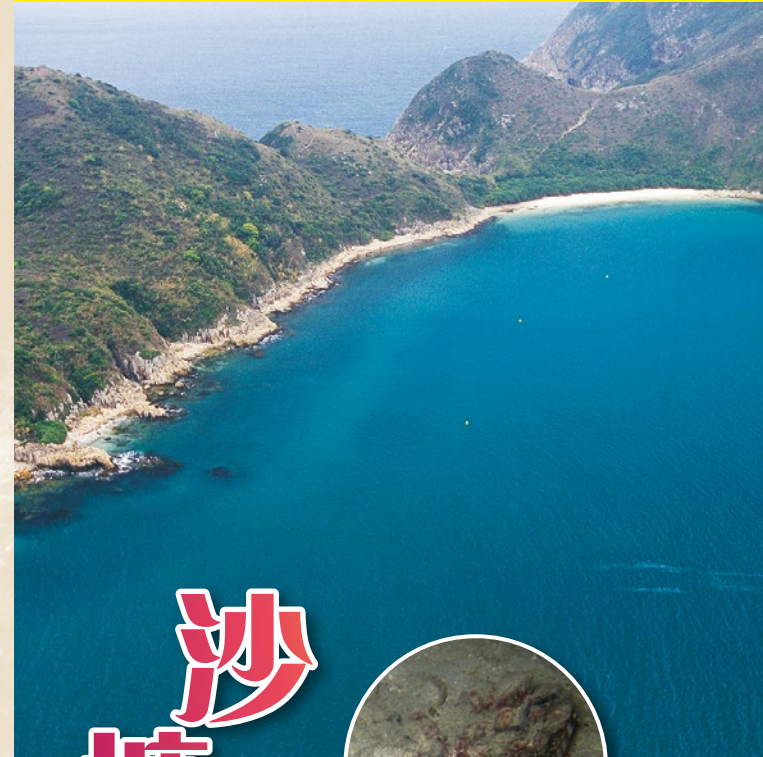
查詢 Enquiries:1823



香港生物多樣性策略及行動計劃
Biodiversity Strategy and Action Plan (BSAP) for Hong Kong
www.afcd.gov.hk/bsap



請勿在沙塘口山"不宜碇泊區"拋錨
Not to anchor in "No-anchoring Area"
of Bluff Island



沙塘口山

Bluff Island



漁農自然護理署
Agriculture, Fisheries and
Conservation Department



甕缸灣位於外牛尾海沙塘口山西北面，是一個細小而平靜的海灣。甕缸灣沿岸遍佈珊瑚群落，石珊瑚的覆蓋率超過 50%，而數量最多的是一些罕有而脆弱的品種，包括分枝狀的鹿角珊瑚 (*Acropora* sp.) 和片狀的薔薇珊瑚 (*Montipora* sp.)。漁農自然護理署 (漁護署) 已於二零零一年十二月在這區域設置四個珊瑚標誌浮標，珊瑚標誌浮標劃出珊瑚覆蓋率高的範圍，提醒駕駛船隻人士避免在該範圍下錨停泊，成效顯著。

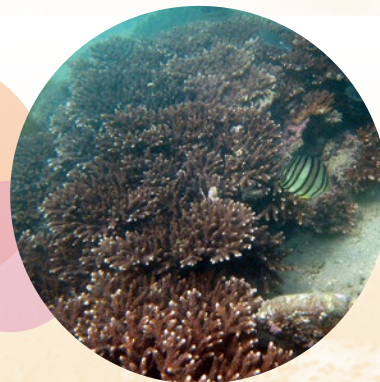
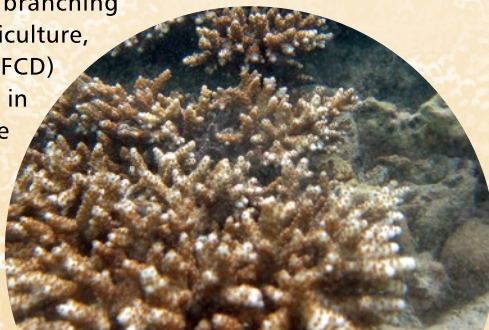
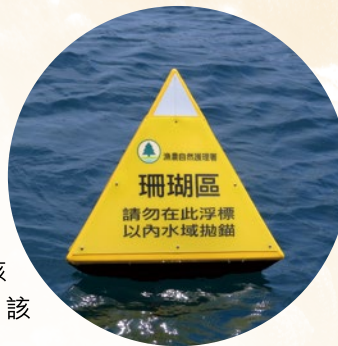
Ung Kong Wan is a small sheltered bay on the northwestern side of Bluff Island in Outer Port Shelter. It possesses a fringing coral community characterized by a high coral coverage over 50% and dominated by some rare but fragile coral species including the branching *Acropora* sp. and plating *Montipora* sp. Agriculture, Fisheries and Conservation Department (AFCD) installed four coral marker buoys at this area in December 2001. The coral marker buoys serve to mark off areas with high coral coverage and notify the marine users to avoid using the area for boat anchoring. It is proved to be an effective measure.

“不宜碇泊區”位置

“不宜碇泊區”位置設立在沙塘口山西北面的甕缸灣，由 4 個印有“珊瑚區 請勿在此浮標以內水域拋錨”黃色珊瑚標誌浮標劃出珊瑚覆蓋率高的範圍，提醒駕駛船隻人士避免在該範圍下錨停泊。其位置見地圖所示，該處範圍近岸位置長有珊瑚。

Location of the “No-anchoring area”

“No-anchoring area” was set up at Ung Kong Wan which is located at the northwestern side of Bluff Island, indicated by 4 yellow coral marker buoys marked with “Coral area Please do not anchor inshore side of this marker” to mark off areas with high coral coverage and notify the marine users to avoid using the area for boat anchoring. The location of which is marked in the map, close to the shore contains fragile coral communities.



珊瑚的特性

- 珊瑚擁有脆弱的鈣化外骨骼
- 生長速度緩慢，有些珊瑚每年生長少於 1 厘米
- 在 10 米水深以上生長

Characteristics of corals

- Coral possesses a fragile calcareous exoskeleton
- Very slow growing animal with growth rate less than 1cm per year in some coral species
- Grow at above 10m water depth