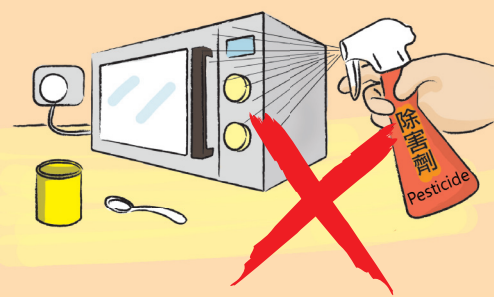


在施用除害劑時

During pesticides application

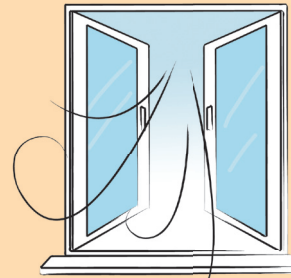
- 在室內施用除害劑時，關掉冷氣機
Turn off air conditioner during indoor application
- 遵照標籤上的指示使用
Use according to label instructions
- 按標籤指示穿著保護衣物
Wear protective clothing as directed by the label
- 確保孩童、寵物、食物、廚具及玩具遠離施藥範圍，並覆蓋水族箱
Keep children, pets, food, kitchen utensils and toys away from the treated area and cover aquariums
- 避免把除害劑噴灑在操作中的電器上或處理食物的地方
Avoid spraying pesticides on operating electrical appliances or food preparation areas
- 切勿飲食或吸煙
Do not eat, drink or smoke
- 如遇刮風或下雨天，切勿在戶外施用除害劑
Do not apply pesticides outdoors in windy or rainy days
- 切勿把藥餌放置在孩童及寵物可能觸及的地方
Do not place the baits in locations accessible to children and pets



在施用除害劑後

After pesticides application

- 用肥皂及清水洗手
Wash your hands with soap and water



- 確保室內的施藥範圍空氣完全流通，才可讓他人再次進入
Ventilate treated indoor area thoroughly before re-entry

- 遵照標籤上的指示，安全貯存和棄置除害劑
Follow directions on the label for safe storage and disposal of the pesticide

- 把除害劑貯存在原裝容器內
Store pesticides in their original containers
- 把除害劑貯存在遠離孩童、寵物及食物的地方
Store pesticides away from children, pets and food

- 切勿把除害劑容器作其他用途
Do not re-use pesticide container for any other purpose



如發生除害劑中毒事故

In case of pesticide poisoning

- ☒ 除害劑中毒的徵狀可包括頭痛、疲倦、噁心、暈眩、精神緊張、視力模糊、眼部不適、鼻喉不適、皮膚不適、腹部痙攣、腹瀉、嘔吐、排汗過多、唾液分泌過多、肌肉抽搐、呼吸困難及失去知覺
Symptoms of pesticide poisoning may include headache, fatigue, nausea, dizziness, nervousness, blurred vision, eye irritation, irritation of throat and nose, skin irritation, abdominal cramp, diarrhea, vomiting, excessive perspiration, excessive salivation, muscle twitching, inability to breathe, and unconsciousness

- ☒ 除害劑中毒的一般急救方法：
General first aid treatment for pesticide poisoning:

- ★ 如除害劑濺入眼睛，以緩速的水流沖洗眼部。
If pesticide is in the eye, wash the eye with a gentle stream of running water.
- ★ 如除害劑觸及皮膚，以大量肥皂及清水清洗觸及部位。
If pesticide is on the skin, wash with a large quantity of soap and running water.
- ★ 如有人吸入除害劑，把該人移至空氣清新的地方。
If pesticide is inhaled, move the person to fresh air.

- ☒ 立即攜同除害劑容器或標籤，求醫診治
Always seek medical help immediately and bring along the pesticide container or label

查詢 Enquiries

漁農自然護理署
植物及除害劑監理科

Agriculture, Fisheries and Conservation Department
Plant and Pesticides Regulatory Division

地址 Address：香港九龍長沙灣道303號長沙灣政府合署5樓
5/F., Cheung Sha Wan Government Offices,
303 Cheung Sha Wan Road, Kowloon, Hong Kong.

電話 Tel.：2150 7007

傳真 Fax.：2314 2622

電郵 E-mail：mailto:mailbox@afcd.gov.hk

網頁 Website：www.afcd.gov.hk



安全及正確使用除害劑



Safe and Proper Use
of Pesticides



漁農自然護理署
Agriculture, Fisheries and Conservation Department

精明使用除害劑 產品標籤你要睇 安全措施要做齊

Be Smart about Using Pesticides
Read Product Labels
Follow Precautionary Rules



漁農自然護理署
Agriculture, Fisheries and Conservation Department

香港的除害劑管制措施 Control of pesticides in Hong Kong

“除害劑”指任何除蟲劑、除真菌劑、除草劑、除蟻劑、殺鼠劑或任何用以防治蟲害的物質。
“Pesticide” refers to any insecticide, fungicide, herbicide, acaricide, rodenticide or any substance used to control pests.

根據《除害劑條例》(第133章)，漁農自然護理署署長須備存除害劑註冊紀錄冊。該紀錄冊分為兩部分：
Under the Pesticides Ordinance (Cap.133), the Director of Agriculture, Fisheries and Conservation maintains a register of pesticides which consists of two parts:

● 第I部載列即用型家用除害劑(例如防治螞蟥和蟑螂的藥餌和噴霧殺蟲劑、蚊香、驅蚊貼等)
Part I contains ready-to-use domestic pesticides (e.g. ant and cockroach baits and aerosol sprays, mosquito coils and mosquito patches)

● 第II部載有一份所有其他除害劑(例如農用除害劑和除草劑等)的列表
Part II contains a list of all other pesticides (e.g. agricultural pesticides and herbicides)

所有在香港供應及零售的除害劑，均須按照《除害劑條例》的規定註冊。
All pesticides for supply and sales in Hong Kong must be registered under the Pesticides Ordinance.



安全及正確使用除害劑 Safe and proper use of pesticides

在施用除害劑前
Before pesticides application

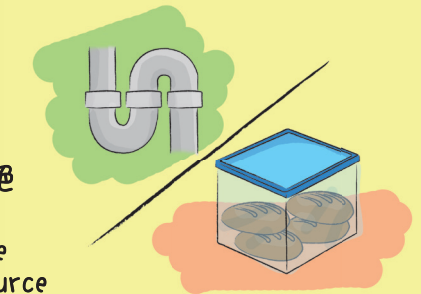
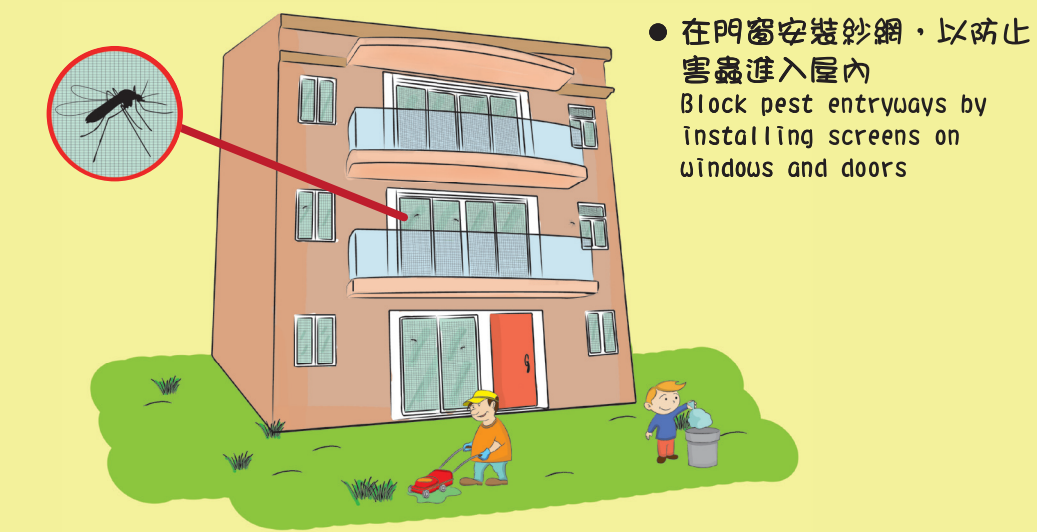
● 鑑定及評估蟲害情況
Identify and assess the pest problem

● 先考慮以其他方法防治病蟲害
Consider alternative methods first for pest and disease control

● 改善環境衛生
Improve sanitation

● 改變害蟲棲息的環境(例如修理滲漏的水管或以密封的容器盛載食物，以斷絕水源及食糧)
Modify habitat (e.g. remove water source by fixing leaky pipes or remove food source by storing food in sealed containers)

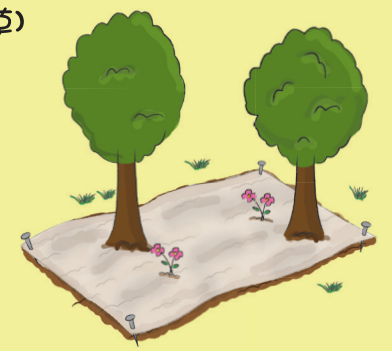
● 在門窗安裝紗網，以防止害蟲進入屋內
Block pest entryways by installing screens on windows and doors



● 使用防治蟲鼠的機械裝置
Use mechanical devices for rodent and insect control

● 考慮以非化學方式除草(例如用人手除草)
Consider weed control by non-chemical means (e.g. hand pick weeds)

● 在泥面鋪上護蓋物，以防雜草叢生
Mulch to prevent weed growth



● 選用合適的除害劑，以防治目標害蟲
Choose the right pesticides to control the target pests

● 選用市面上毒性和持久性較低的除害劑
Choose less toxic and less persistent pesticides available

● 選擇合適的劑型
Select an appropriate formulation

● 不要購買和存放過量的除害劑
Do not purchase and stock excessive amount of pesticides

● 只向除害劑牌照持有人購買已註冊除害劑
Buy registered pesticides from Pesticides Licencees only



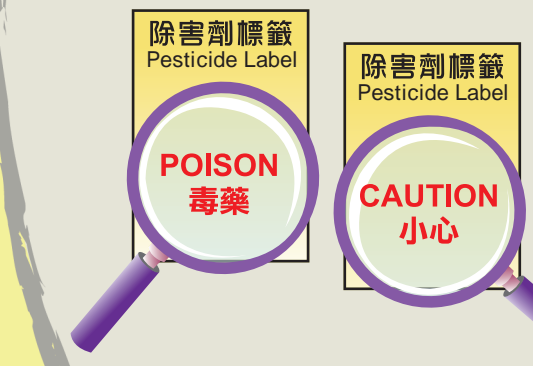
在使用除害劑產品前，細閱標籤 Read the label before using a pesticide product

除害劑產品必須附有雙語標籤，以中、英文清楚而明確地列明以下資料，包括：
The following information should be included clearly and distinctly in a Chinese-English bilingual version on a pesticide label:



● 所有活性成分的組成百分比
Composition by percentage of all active ingredients

● 內含物的淨重量或容量
Net weight or volume of the contents



● 註冊編號：“1PXXX” (第I部除害劑)或“2PXXX” (第II部除害劑)
Registration number, “1PXXX” for Part I pesticides or “2PXXX” for Part II pesticides

● 商用名稱、化學名稱及通用名稱(如有)
Trade name, chemical name and common name, if any

● 英文“Poison”或“Caution”及中文“毒藥”或“小心”字樣(視乎除害劑的註冊條件而定)
The word “Poison” or “Caution” and the characters “毒藥” or “小心” (subject to the registration condition of the pesticide)

● 英文“Keep out of reach of children”及中文“遠離孩童”字句
The expression “Keep out of reach of children” and the characters “遠離孩童”



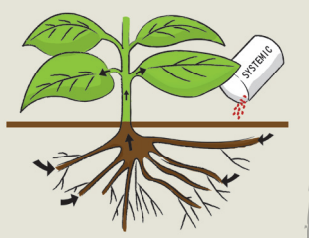
● 使用須知(例如：使用量、稀釋比率、何時及在何處使用除害劑)
User instructions (e.g. application rate, dilution rate, when and where to use the pesticide)

● 防範措施
Precautionary measures

● 解毒劑(如適用)及急救方法
Antidote (if available) and first-aid instructions

● 供應商或零售商的名稱及地址
Name and address of the supplier or the retailer

● 如該除害劑具內吸作用(即被植物吸收後會在植物內傳導)，須註明“SYSTEMIC”字樣
The word “SYSTEMIC” if the pesticide has a systemic action (i.e. moves inside a plant after being absorbed by the plant)



● 如除害劑是用於糧食作物，須註明最近一次施用除害劑與糧食作物收成之間的建議相隔時間
If the pesticide is to be used on food crops, the recommended time interval between the last application and harvesting of the crop