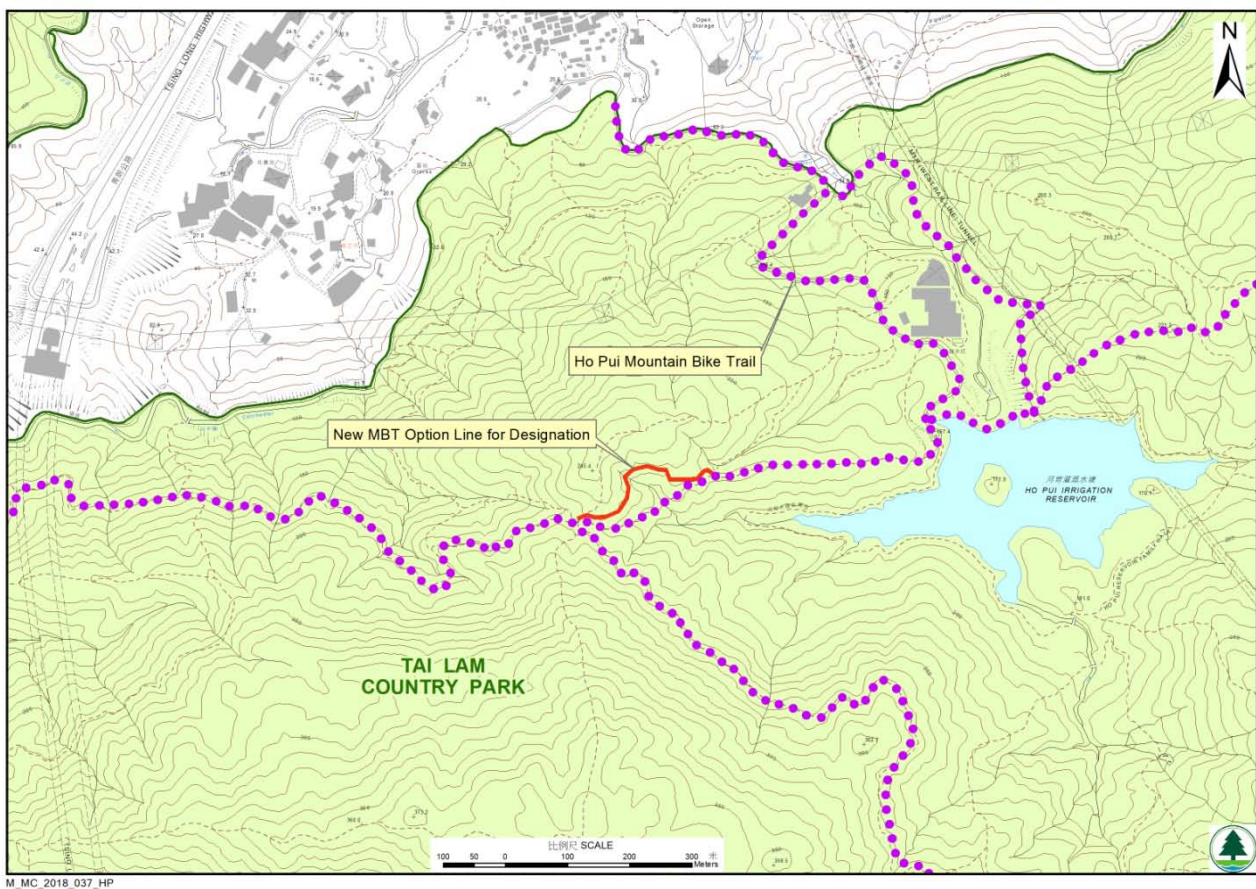


Two new option lines along Ho Pui and Tai Lam Chung Reservoir Mountain Bike Trails will be opened on 1 October 2018

Two new option lines near Ho Pui Reservoir and Pak Shek Hang, with a length of about 300m and 200m respectively, will be opened on 1 October 2018 for mountain biking (please refer to figures below for their alignment and photos). Both option lines were designed and constructed in accordance with the sustainable trail standards of the International Mountain Bicycling Association (IMBA). They were created to enhance mountain bikers' ride experience by providing an easier and a more flowy option.

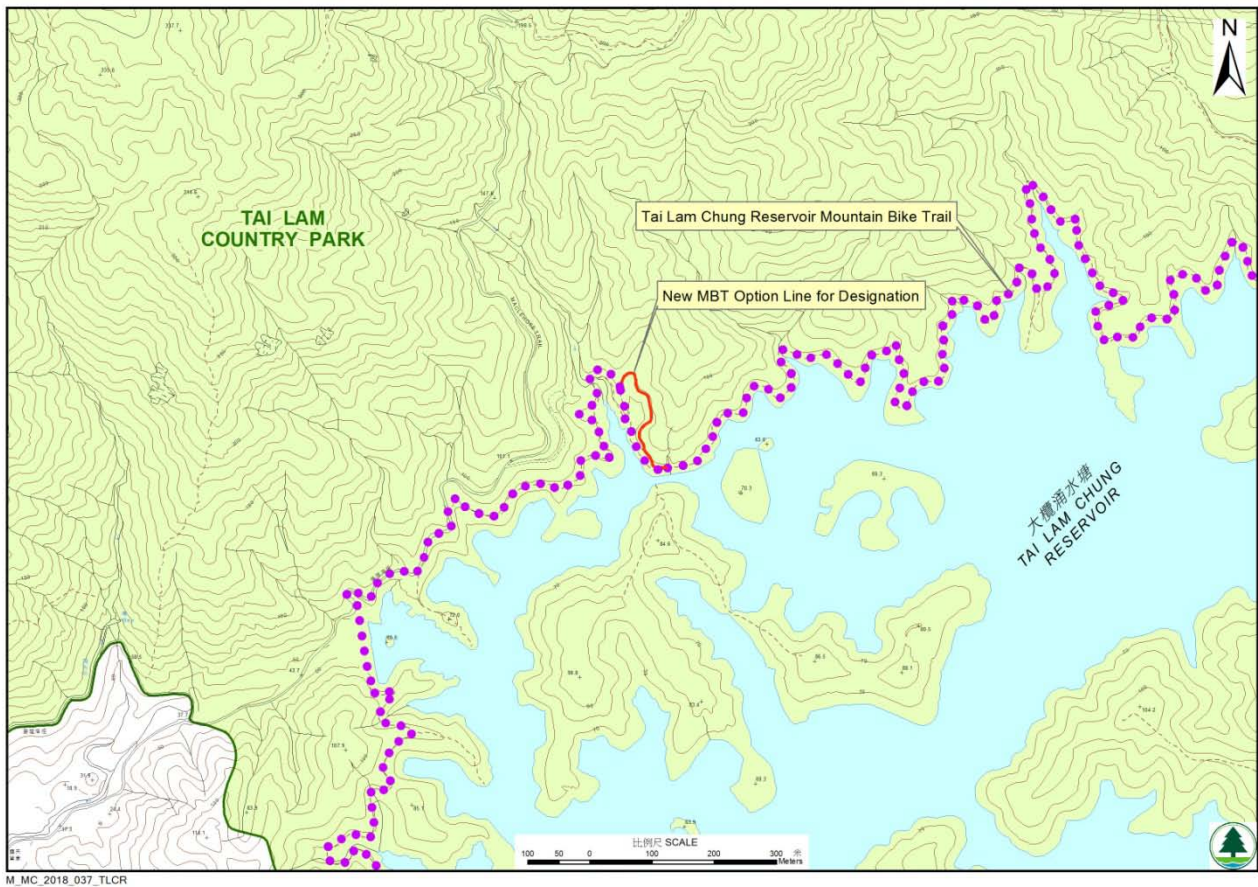
Location of the new option line along Ho Pui Mountain Bike Trail (West of Ho Pui Reservoir)



Photos of new option line along Ho Pui MBT



Location of the new option line along Tai Lam Chung Reservoir Mountain Bike Trail (Northeast of Pak Shek Hang)



Photos of new option line along Tai Lam Chung Reservoir MBT

