



「漁+樂」魚場名單

List of "Fish enjoy" Fish Farms

(截至 As at 30/4/2026)

內陸休閒魚場

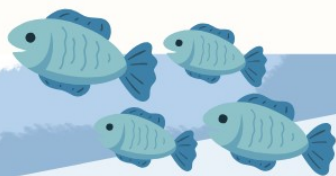
魚場名稱 Farm Name	魚場地址 Farm Address	交通 Transportation	聯絡電話及網頁 Contact No. & Webpages	開放時間 Opening Hours
1 大生漁業水產 [#]	新界元朗丈量約份第135 約地段第101號段上白泥 8A (A部份) (Portion A), 8A Sheung Pak Nai, Lot 101 in D.D.135, Yuen Long, New Territories	新界專線小巴 33線、 的士、或自駕 New Territories Green Minibus route 33; Taxi; or Self-drive	60211878	逢周六、周日及公眾假期； 時間：12:00 至 19:00，平日接 受團體預約 (如有意到訪，建議提前預 約。) 12:00—19:00 on Saturdays, Sundays and public holidays, also accept group booking on week- days; reservations are recom- mended prior to the visit
2 暉傑有機魚場 [#] Fai Kit Organic Fish Farm [#]	新界大埔蘆慈田丈量約份 第17約地段第1580及 1581號段 Lot 1580 & 1581 in D.D.17, Lo Tsz Tin, Tai Po, New Territories	九巴 75K路線、新界 專線小巴 20C線、 的士、或自駕 KMB route 75K; New Territories Green Mini- bus route 20C; Taxi; or Self-drive	64843754 Web	逢星期一至日； 時間：09:00 至 17:00 (如有意到訪，建議提前預 約。) 09:00—17:00 on Mondays to Sundays; reservations are recom- mended prior to the visit
3 鴨仔坑釣魚場	新界流浮山上白泥 鴨仔坑釣魚場	新界專線小巴 33線、 或的士 New Territories Green Minibus route 33; or Taxi	24726134 FB; Web	逢星期一至日； 時間：08:00 至 20:00 08:00—20:00 on Mondays to Sundays

需要預約 Reservation is required

Web: Webpage 網頁

FB: Facebook 專頁

IG: Instagram 帳戶



"Fish enjoy" Scheme
「漁+樂」魚場計劃



「漁+樂」魚場名單

List of "Fish enjoy" Fish Farms

(截至 As at 30/4/2026)

內陸休閒魚場

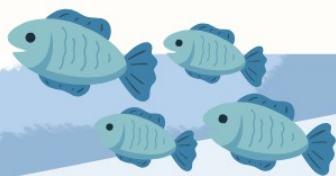
	魚場名稱 Farm Name	魚場地址 Farm Address	交通 Transportation	聯絡電話及網頁 Contact No. & Webpages	開放時間 Opening Hours
4	富琴有機火龍果 生態農莊 [#] Fu Kum Organic Pitaya Farm [#]	新界上水古洞馬草壟 鐵坑村5-10號	非專線小巴 17線、的 士、或自駕 Red Minibus route 17; Taxi; or Self-drive	65909268 FB	逢星期一至日； 時間：09:00 至 18:00 (如有意到訪，建議提前預 約。) 09:00—18:00 on Mondays to Sundays; reservations are recommended prior to the visit
5	明輝有機農莊 [#] Ming Fai Organic Garden [#]	新界大埔大窩村丈量約份 第7約地段第120B RP及 125 S.A.B.C.F.G.H RP號段 Lot 120B RP & 125 S.A.B.C.F.G.H RP in D.D.7, Tai Wo Tsuen, Tai Po, New Territories	九巴 73, 73A, 74D 路線、新界專線小巴 25A, 25B線、的士、 或自駕 KMB route 73, 73A, 74D; New Territories Green Minibus route 25A, 25B; Taxi; or Self-drive	60672485 FB	逢星期二至日； 時間：09:00 至 18:00 (如有意到訪，建議提前預 約。) 09:00—18:00 on Tuesdays to Sundays; reserva- tions are recommended prior to the visit

需要預約 Reservation is required

Web: Webpage 網頁

FB: Facebook 專頁

IG: Instagram 帳戶



"Fish enjoy" Scheme
「漁+樂」魚場計劃



「漁+樂」魚場名單

List of "Fish enjoy" Fish Farms

(截至 As at 30/4/2026)

內陸休閒魚場

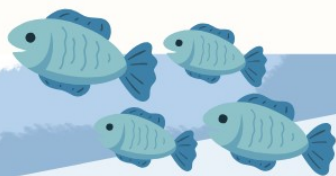
	魚場名稱 Farm Name	魚場地址 Farm Address	交通 Transportation	聯絡電話及網頁 Contact No. & Webpages	開放時間 Opening Hours
6	港漁 [#]	新界錦田逢吉鄉丈量約份 第107約地段第1369號段 Lot 1369 in D.D.107, Fung Kat Heung, Kam Tin, New Territories	的士 Taxi	97979753 Web	逢星期一至日； 時間：08:00 至 16:00 (如有意到訪，建議提前預 約。) 08:00—16:00 on Mondays to Sundays; reservations are recommended prior to the visit
7	香港魚菜共生 集團有限公司 [#]	新界錦田水尾村丈量約份 第109約地段第819號段和 華園 Wo Wah Yuen, Lot 819, D.D.109, Shui Mei Tsuen, Kam Tin, Yuen Long, New Territories	新界專綫小巴 601, 601B線、的士、 或自駕 New Territories Green Minibus route 601, 601B; Taxi; or Self-drive	56174343 FB; Web	逢星期一至日； 時間：09:00 至 17:00 (如有意到訪，建議提前預 約。) 09:00—17:00 on Mondays to Sundays; reservations are recommended prior to the visit
8	羅佩芳 [#]	新界元朗牛潭尾和生圍 榕樹圍1號	非專綫小巴 17線 Red Minibus route 17	61525087	逢周六、周日及公眾假期； 時間：10:00 至 16:00 (如有意到訪，建議提前預 約。) 10:00—16:00 on Saturdays, Sundays and public holidays; reservations are recommended prior to the visit

需要預約 Reservation is required

Web: Webpage 網頁

FB: Facebook 專頁

IG: Instagram 帳戶



"Fish enjoy" Scheme
「漁+樂」魚場計劃



「漁+樂」魚場名單

List of "Fish enjoy" Fish Farms

(截至 As at 30/4/2026)

內陸休閒魚場

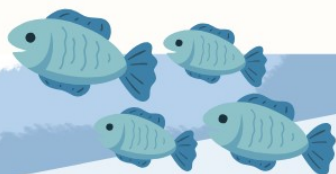
魚場名稱 Farm Name	魚場地址 Farm Address	交通 Transportation	聯絡電話及網頁 Contact No. & Webpages	開放時間 Opening Hours
9 小薈農場 [#]	新界粉嶺鶴藪圍丈量約份第76約地段第762、764及770號段 Lot 762, 764 & 770 in D.D.76, Hok Tau Country Trail, Fanling, New Territories	新界專線小巴 52B線、或的士 New Territories Green Minibus route 52B; or Taxi	92279895 FB; Web	逢星期一至日； 時間：10:00 至 17:00 (如有意到訪，建議提前預約。) 10:00—17:00 on Mondays to Sundays; reservations are recommended prior to the visit
10 - [#]	新界元朗丈量約份第135約地段第52號段上白泥8A 8A Sheung Pak Nai, Lot 52 in D.D.135, Yuen Long, New Territories	新界專線小巴 33線、的士、或自駕 New Territories Green Minibus route 33; Taxi; or Self-drive	60211878	逢周六、周日及公眾假期； 時間：12:00 至 19:00，平日接受團體預約 (如有意到訪，建議提前預約。) 12:00—19:00 on Saturdays, Sundays and public holidays, also accept group booking on week-days; reservations are recommended prior to the visit

需要預約 Reservation is required

Web: Webpage 網頁

FB: Facebook 專頁

IG: Instagram 帳戶



"Fish enjoy" Scheme
「漁+樂」魚場計劃



「漁+樂」魚場名單

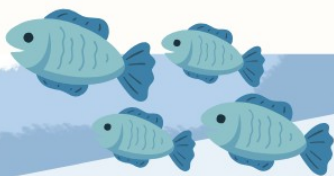
List of "Fish enjoy" Fish Farms

(截至 As at 30/4/2026)

海魚休閒魚排

	牌照持有人及 牌照編號 Licensee name and Licence number	魚類養殖區 Fish Culture Zone	交通安排 Transportation Arrangement	聯絡電話 Contact No.	開放時間 Opening Hours
1	水中天休閒釣魚會有限 公司 Water Sky Leisure Fishing Club Company Limited (LN5421)	鹽田仔(東) Yim Tin Tsai (East)	聯絡持牌人安排船隻接送 來往三門仔聯益碼頭及魚 排 Contact licensee via phone to arrange transportation to and from Luen Yick Ferry Pier.	9081 9794	24小時開放, 年中無休。 Opens 24/7, all year round.
2	張麗明 Cheung Lai Ming (LN4454)	滘西 Kau Sai	聯絡持牌人安排船隻接送 來往西貢市3號梯台及魚排 Contact licensee via phone to arrange transportation to and from Sai Kung Town Landing No.3.	9685 5988	逢星期一休息(不包括公眾假期)。 開放時間為上午9時至下午5時。 Closed on Mondays (excluding public holidays). Opens from 9-5 on business days.
3	梁健明 Leung Kin Ming (LN4599)	榕樹凹 Yung Shue Au	聯絡持牌人安排船隻接送 來往井頭碼頭及魚排 Contact licensee via phone to arrange transportation to and from Tseng Tau Pier.	9362 1913	24小時開放, 年中無休。 Opens 24/7, all year round.

所有海魚休閒魚排皆需要預約 Reservations are required to visit leisure mariculture rafts



"Fish enjoy" Scheme
「漁+樂」魚場計劃



「漁+樂」魚場名單

List of "Fish enjoy" Fish Farms

(截至 As at 30/4/2026)

海魚休閒魚排

	牌照持有人及 牌照編號 Licensee name and Licence number	魚類養殖區 Fish Culture Zone	交通安排 Transportation Arrangement	聯絡電話 Contact No.	開放時間 Opening Hours
4	朱志凱 Chu Chi Hoi, Mickey (LN5451)	榕樹凹 Yung Shue Au	聯絡持牌人安排船隻接送 來往井頭碼頭及魚排 Contact licensee via phone to arrange transportation to and from Tseng Tau Pier.	9035 3501	全年開放（包括公眾假期）。開放時 間為上午8時至下午6時。 Opens all year round (including public holidays). Opens from 8am- 6pm, on business days.
5	何容木 Ho Yung Muk (LN1362)	鹽田仔(東) Yim Tin Tsai (East)	聯絡持牌人安排船隻接送 來往三門仔聯益碼頭及魚 排 Contact licensee via phone to arrange transportation to and from Luen Yick Ferry Pier.	9346 4183	24小時開放，年中無休。 Opens 24/7, all year round.
6	李發來 Lee Fat Loi (LN5255)	鹽田仔 Yim Tin Tsai	聯絡持牌人安排船隻接送 來往三門仔漁安街碼頭及 魚排 Contact licensee via phone to arrange transportation to and from Yu On Street Pier, Sam Mun Tsai	9187 2600	全年開放（包括公眾假期）。開放時 間為上午9時至下午6時。 Opens all year round (including public holidays). Opens from 9am - 6pm on business days.

所有海魚休閒魚排皆需要預約 Reservations are required to visit leisure mariculture rafts



"Fish enjoy" Scheme
「漁+樂」魚場計劃



「漁+樂」魚場名單

List of "Fish enjoy" Fish Farms

(截至 As at 30/4/2026)

海魚休閒魚排

	牌照持有人及 牌照編號 Licensee name and Licence number	魚類養殖區 Fish Culture Zone	交通安排 Transportation Arrangement	聯絡電話 Contact No.	開放時間 Opening Hours
7	羅志偉 Law Chi Wai (LN2567)	榕樹凹 Yung Shue Au	聯絡持牌人安排船隻接送 來往井頭碼頭及魚排 Contact licensee via phone to arrange transportation to and from Tseng Tau Pier.	9520 7509	24小時開放，年中無休。 Opens 24/7, all year round.
8	陳秀琮 Chan Sau King (LN5391)	鹽田仔(東) Yim Tin Tsai (East)	聯絡持牌人安排船隻接送 來往三門仔聯益碼頭及魚 排 Contact licensee via phone to arrange transportation to and from Luen Yick Ferry Pier.	9484 9009	全年開放（包括公眾假期）。開放時 間為上午7時至下午7時。 Opens all year round (including public holidays). Opens from 7am - 7pm, on business days.
9	鍾好連 Chung Ho Lin (LN5312)	鹽田仔(東) Yim Tin Tsai (East)	聯絡持牌人安排船隻接送 來往三門仔聯益碼頭及魚 排 Contact licensee via phone to arrange transportation to and from Luen Yick Ferry Pier.	9178 5847	全年開放（包括公眾假期）。開放時 間為上午9時至下午6時。 Opens all year round (including public holidays). Opens from 9am - 6pm, on business days.

所有海魚休閒魚排皆需要預約 Reservations are required to visit leisure mariculture rafts



"Fish enjoy" Scheme
「漁+樂」魚場計劃



「漁+樂」魚場名單

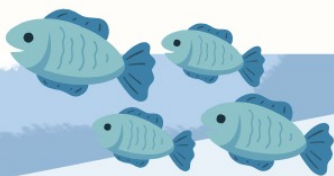
List of "Fish enjoy" Fish Farms

(截至 As at 30/4/2026)

海魚休閒魚排

	牌照持有人及 牌照編號 Licensee name and Licence number	魚類養殖區 Fish Culture Zone	交通安排 Transportation Arrangement	聯絡電話 Contact No.	開放時間 Opening Hours
10	MAS INTERNATIONAL HOLDINGS LTD (LN4353)	湑西 Kau Sai	聯絡持牌人安排船隻接送 來往西貢市3號梯台及魚排 Contact licensee via phone to arrange transportation to and from Sai Kung Town Landing No.3.	2437 5247	全年開放（包括公眾假期）。開放時 間為上午10時至下午8時。 Opens all year round (including public holidays). Opens from 10am - 8pm, on business days.
11	蘇敬河 So King Ho (LN4733)	榕樹凹 Yung Shue Au	聯絡持牌人安排船隻接送 來往井頭碼頭及魚排 Contact licensee via phone to arrange transportation to and from Tseng Tau Pier.	9882 5120	全年開放。開放時間為上午9時至下 午10時。 Opens all year round. Opens from 9am - 10pm, on business days.
12	莊聰圖 Chong Chun To (LN4865)	湑西 Kau Sai	聯絡持牌人安排船隻接送 來往白沙灣碼頭及魚排 Contact licensee via phone to arrange transportation to and from Pak Sha Wan Pier.	9039 1841	全年開放（包括公眾假期）。開放時 間為上午9時至下午6時。 Opens all year round (including public holidays). Opens from 9am - 6pm, on business days.

所有海魚休閒魚排皆需要預約 Reservations are required to visit leisure mariculture rafts



"Fish enjoy" Scheme
「漁+樂」魚場計劃



「漁+樂」魚場名單

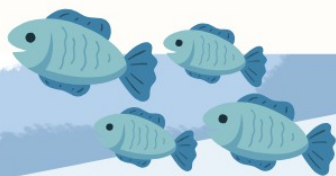
List of "Fish enjoy" Fish Farms

(截至 As at 30/4/2026)

海魚休閒魚排

	牌照持有人及 牌照編號 Licensee name and Licence number	魚類養殖區 Fish Culture Zone	交通安排 Transportation Arrangement	聯絡電話 Contact No.	開放時間 Opening Hours
13	陳繼喜 Chan Kai Hei (LN3962)	鹽田仔(東) Yim Tin Tsai (East)	聯絡持牌人安排船隻接送 來往三門仔聯益碼頭及魚 排 Contact licensee via phone to arrange transportation to and from Luen Yick Ferry Pier.	6195 8428	24小時開放，年中無休。 Opens 24/7, all year round.
14	俊龍有限公司 Ace Dragon Corporation Limited (LN5258)	麻南笏 Ma Nam Wat	聯絡持牌人安排船隻接送 來往白沙灣碼頭及魚排 Contact licensee via phone to arrange transportation to and from Pak Sha Wan Pier.	6523 6769	24小時開放，年中無休。 Opens 24/7, all year round.
15	詹燕群 Jim Yin Kwan Jackin (LN4872)	榕樹凹 Yung Shue Au	聯絡持牌人安排船隻接送 來往井頭碼頭及魚排 Contact licensee via phone to arrange transportation to and from Tseng Tau Pier.	6809 1229	逢星期日休息（不包括公眾假期）。 開放時間為上午9時至凌晨2時。 Closed on Sunday (excluding public holi- days). Opens from 9am - 2am on business days.

所有海魚休閒魚排皆需要預約 Reservations are required to visit leisure mariculture rafts



"Fish enjoy" Scheme
「漁+樂」魚場計劃



「漁+樂」魚場名單

List of "Fish enjoy" Fish Farms

(截至 As at 30/4/2026)

海魚休閒魚排

	牌照持有人及 牌照編號 Licensee name and Licence number	魚類養殖區 Fish Culture Zone	交通安排 Transportation Arrangement	聯絡電話 Contact No.	開放時間 Opening Hours
16	陳愛雲 Chan Oi Wan (LN4500)	榕樹凹 Yung Shue Au	聯絡持牌人安排船隻接送 來往井頭碼頭及魚排 Contact licensee via phone to arrange transportation to and from Tseng Tau Pier.	9016 0244	24小時開放，年中無休。 Opens 24/7, all year round.
17	陳嬌 Chan Kiu (LN4072)	滘西 Kau Sai	聯絡持牌人安排船隻接送 來往西貢市3號梯台及魚排 Contact licensee via phone to arrange transportation to and from Sai Kung Town Landing No.3.	9163 8130	逢星期一休息（不包括公眾假期）。 開放時間為上午9時至下午5時。 Closed on Monday (excluding public holidays). Opens from 9am - 5pm on business days.
18	莊良旺 Chong Leung Wong Albert (LN5068)	鹽田仔(東) Yim Tin Tsai (East)	聯絡持牌人安排船隻接送 來往三門仔聯益碼頭及魚 排 Contact licensee via phone to arrange transportation to and from Luen Yick Ferry Pier.	9071 7312	全年開放（包括公眾假期）。開放時 間為上午9時至下午6時。 Opens all year round (including public holidays). Opens from 9am - 6pm, on business days.

所有海魚休閒魚排皆需要預約 Reservations are required to visit leisure mariculture rafts



"Fish enjoy" Scheme
「漁+樂」魚場計劃



「漁+樂」魚場名單

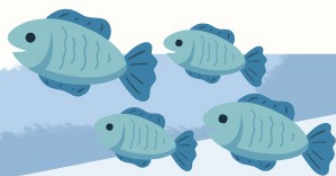
List of "Fish enjoy" Fish Farms

(截至 As at 30/4/2026)

海魚休閒魚排

	牌照持有人及 牌照編號 Licensee name and Licence number	魚類養殖區 Fish Culture Zone	交通安排 Transportation Arrangement	聯絡電話 Contact No.	開放時間 Opening Hours
19	鄭偉雄 Cheng Wai Hung (LN5463)	大頭洲 Tai Tau Chau	聯絡持牌人安排船隻接送 來往西貢公眾碼頭及魚排 Contact licensee via phone to arrange transportation to and from Sai Kung Public Pier.	9369 1136	逢星期日休息（不包括公眾假期）。 平日開放時間為上午9時至下午6時。 公眾假期開放時間為上午9時至下午 10時。 Closed on Sunday (excluding public holi- days). Opens from 9am - 6pm on week- days, and opens from 9am to 10pm on public holidays.
20	何家俊 Ho Kar Chuen (LN4387)	榕樹凹 Yung Shue Au	聯絡持牌人安排船隻接送 來往井頭碼頭或榕樹澳碼 頭及魚排 Contact licensee via phone to arrange transportation to and from Tseng Tau Pier or Yung Shue Au Pier.	6448 4585	全年開放（包括公眾假期）。開放時 間為上午9時至下午11時。 Opens all year round (including public holidays). Opens from 9am - 11pm, on business days.
21	永興創富有限公司 WIN FORTUNE WEALTH CREATION LIMITED (LN 4730)	鹽田仔(東部) Yim Tin Tsai (East)	聯絡持牌人安排船隻接送 來往大美督公眾碼頭、三 門仔聯益碼頭及魚排 Contact licensee via phone to arrange transportation to and from Tai Mei Tuk Landing and Luen Yick Ferry Pier.	6428 6808	逢星期日休息（包括公眾假期）。平 日全日開放。 Closed on Sunday (including public holi- days). Opens 24 hours on weekdays.

所有海魚休閒魚排皆需要預約 Reservations are required to visit leisure mariculture rafts



"Fish enjoy" Scheme
「漁+樂」魚場計劃



「漁+樂」魚場名單

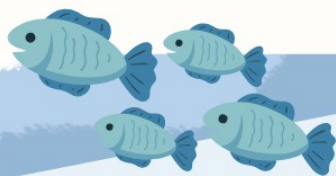
List of "Fish enjoy" Fish Farms

(截至 As at 30/4/2026)

海魚休閒魚排

	牌照持有人及 牌照編號 Licensee name and Licence number	魚類養殖區 Fish Culture Zone	交通安排 Transportation Arrangement	聯絡電話 Contact No.	開放時間 Opening Hours
22	富善貿易有限公司 FULL SINCERE TRADING LIMITED (LN 5179)	鹽田仔 Yim Tin Tsai	聯絡持牌人安排船隻接送 來往三門仔漁安街碼頭及 魚排 Contact licensee via phone to arrange transportation to and from Yu On Street Pier, Sam Mun Tsai	6155 5124	全年開放（包括公眾假期）。開放時 間為上午8時至下午6時。 Opens all year round (including on public holidays). Opens from 8am - 6pm, on business days.
23	林克倫 LAM HAK LUN (LN 5365)	鹽田仔 Yim Tin Tsai	聯絡持牌人安排船隻接送 來往黃石碼頭及魚排 Contact licensee via phone to arrange transportation to and from Wong Shek Pier.	2622 7116	全年開放（不包括公眾假期）。開放 時間為上午6時至下午9時。 Opens all year round (except on public holidays). Opens from 6am - 9pm, on business days.
24	優越(香港)資產管理有 限公司 PRESTIGE(HK) ASSET MANAGEMENT LIM- ITED (LN 5479)	鹽田仔(東部) Yim Tin Tsai (East)	聯絡持牌人安排船隻接送 來往大美督公眾碼頭、三 門仔聯益碼頭及魚排 Contact licensee via phone to arrange transportation to and from Tai Mei Tuk Landing and Luen Yick Ferry Pier.	6349 1968	24小時開放，年中無休。 Opens 24/7, all year round.

所有海魚休閒魚排皆需要預約 Reservations are required to visit leisure mariculture rafts



"Fish enjoy" Scheme
「漁+樂」魚場計劃



「漁+樂」魚場名單

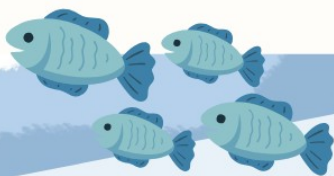
List of "Fish enjoy" Fish Farms

(截至 As at 30/4/2026)

海魚休閒魚排

	牌照持有人及 牌照編號 Licensee name and Licence number	魚類養殖區 Fish Culture Zone	交通安排 Transportation Arrangement	聯絡電話 Contact No.	開放時間 Opening Hours
25	馬偉雄 MA WAI HUNG (LN 5526)	鹽田仔(東部) Yim Tin Tsai (East)	聯絡持牌人安排船隻接送 來往三門仔聯益碼頭及魚 排 Contact licensee via phone to arrange transportation to and from Luen Yick Ferry Pier.	9192 2012	全年開放(不包括公眾假期)。開放 時間為上午8時至凌晨0時。 Opens all year round (except on public holidays). Opens from 8am - 12am, on business days.
26	陳殷慈 CHAN YAN CHI (LN 5557)	雞籠灣 Kai Lung Wan	聯絡持牌人安排船隻接送 來往西貢碼頭及魚排 Contact licensee via phone to arrange transportation to and from Sai Kung Pier.	9252 3867	全年開放(包括公眾假期)。開放時 間為上午9時至下午8時。 Opens all year round (including public holidays). Opens from 9am - 8pm, on business days.
27	黃綽君 WONG CHEUK KWAN ELLIE (LN 5070)	雞籠灣 Kai Lung Wan	聯絡持牌人安排船隻接送 來往西貢碼頭及魚排 Contact licensee via phone to arrange transportation to and from Sai Kung Pier.	9164 5455	全年開放(包括公眾假期)。開放時 間為上午9時至下午6時。 Opens all year round (including public holidays). Opens from 9am - 6pm, on business days.

所有海魚休閒魚排皆需要預約 Reservations are required to visit leisure mariculture rafts



"Fish enjoy" Scheme
「漁+樂」魚場計劃



「漁+樂」魚場名單

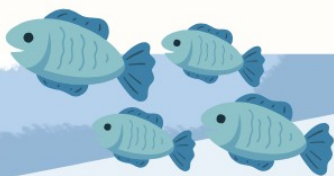
List of "Fish enjoy" Fish Farms

(截至 As at 30/4/2026)

海魚休閒魚排

	牌照持有人及 牌照編號 Licensee name and Licence number	魚類養殖區 Fish Culture Zone	交通安排 Transportation Arrangement	聯絡電話 Contact No.	開放時間 Opening Hours
28	張帶好 CHEUNG TAI HO (LN 5087)	雞籠灣 Kai Lung Wan	聯絡持牌人安排船隻接送 來往西貢碼頭及魚排 Contact licensee via phone to arrange transportation to and from Sai Kung Pier.	9435 8592	全年開放（包括公眾假期）。開放時 間為上午9時至下午8時。 Opens all year round (including public holidays). Opens from 9am - 8pm, on business days.
29	陳耀華 CHAN YUI WAH (LN 5174)	雞籠灣 Kai Lung Wan	聯絡持牌人安排船隻接送 來往西貢碼頭及魚排 Contact licensee via phone to arrange transportation to and from Sai Kung Pier.	9713 1595	全年開放（包括公眾假期）。開放時 間為上午9時至下午5時。 Opens all year round (including public holidays). Opens from 9am - 5pm, on business days.
30	BIKINI BOATING LIMITED (LN 5638)	雞籠灣 Kai Lung Wan	聯絡持牌人安排船隻接送 來往西貢碼頭及魚排 Contact licensee via phone to arrange transportation to and from Sai Kung Pier.	9201 7411	全年開放（包括公眾假期）。開放時 間為上午6時至凌晨2時。 Opens all year round (including public holidays). Opens from 6am - 2am, on business days.

所有海魚休閒魚排皆需要預約 Reservations are required to visit leisure mariculture rafts



"Fish enjoy" Scheme
「漁+樂」魚場計劃



「漁+樂」魚場名單

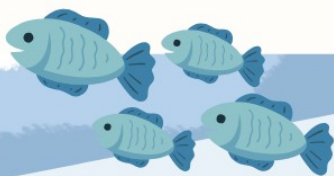
List of "Fish enjoy" Fish Farms

(截至 As at 30/4/2026)

海魚休閒魚排

	牌照持有人及 牌照編號 Licensee name and Licence number	魚類養殖區 Fish Culture Zone	交通安排 Transportation Arrangement	聯絡電話 Contact No.	開放時間 Opening Hours
31	(LN 4921)	滘西 Kau Sai	魚場未有透露相關資訊， 遊客需個別聯絡魚場查詢 交通安排 Information were not dis- closed, visitors need to contact the fish farm individually to inquire about transportation arrangement.	9018 4430	魚場未有透露相關資訊，遊客需個別 聯絡魚場查詢開放時間 Information were not disclosed, visitors need to contact the fish farm individually to inquire about opening hours.
32	(LN 4214)	滘西 Kau Sai	魚場未有透露相關資訊， 遊客需個別聯絡魚場查詢 交通安排 Information were not dis- closed, visitors need to contact the fish farm individually to inquire about transportation arrangement.	2437 5135	魚場未有透露相關資訊，遊客需個別 聯絡魚場查詢開放時間 Information were not disclosed, visitors need to contact the fish farm individually to inquire about opening hours.
33	梁錦明 LEUNG KAM MING (LN 4564)	深灣 Sham Wan	聯絡持牌人安排船隻接送 來往黃石碼頭及魚排 Contact licensee via phone to arrange transportation to and from Wong Shek Pier.	9644 4396	24小時開放，年中無休。 Opens 24/7, all year round.

所有海魚休閒魚排皆需要預約 Reservations are required to visit leisure mariculture rafts



"Fish enjoy" Scheme
「漁+樂」魚場計劃



「漁+樂」魚場名單

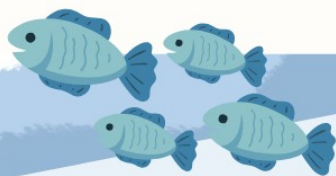
List of "Fish enjoy" Fish Farms

(截至 As at 30/4/2026)

海魚休閒魚排

	牌照持有人及 牌照編號 Licensee name and Licence number	魚類養殖區 Fish Culture Zone	交通安排 Transportation Arrangement	聯絡電話 Contact No.	開放時間 Opening Hours
34	何耀新 HO YIU SAN (LN 4376)	深灣 Sham Wan	聯絡持牌人安排船隻接送 來往黃石碼頭及魚排 Contact licensee via phone to arrange transportation to and from Wong Shek Pier.	6028 3101	全年開放（包括公眾假期）。開放時 間為上午9時至下午5時。 Opens all year round (including public holidays). Opens from 9am - 5pm, on business days.
35	蘇榕根 SO YUNG KUN (LN 2411)	深灣 Sham Wan	聯絡持牌人安排船隻接送 來往黃石碼頭及魚排 Contact licensee via phone to arrange transportation to and from Wong Shek Pier.	9179 2504	24小時開放，年中無休。 Opens 24/7, all year round.
36	黎國威 LAI KWOK WAI (LN 5192)	塔門 Tap Mun	聯絡持牌人安排船隻接送 來往黃石碼頭及魚排 Contact licensee via phone to arrange transportation to and from Wong Shek Pier.	9618 2461	24小時開放，年中無休。 Opens 24/7, all year round.

所有海魚休閒魚排皆需要預約 Reservations are required to visit leisure mariculture rafts



"Fish enjoy" Scheme
「漁+樂」魚場計劃



「漁+樂」魚場名單

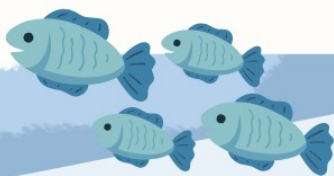
List of "Fish enjoy" Fish Farms

(截至 As at 30/4/2026)

海魚休閒魚排

	牌照持有人及 牌照編號 Licensee name and Licence number	魚類養殖區 Fish Culture Zone	交通安排 Transportation Arrangement	聯絡電話 Contact No.	開放時間 Opening Hours
37	卓悅公司 PREMIER COMPANY (LN 4704)	大頭洲 Tai Tau Chau	聯絡持牌人安排船隻接送 來往西貢碼頭及魚排 Contact licensee via phone to arrange transportation to and from Sai Kung Pier.	9888 0048	24小時開放，年中無休。 Opens 24/7, all year round.
38	石廿八 SHEK YEA BAT (LN 4881)	大頭洲 Tai Tau Chau	聯絡持牌人安排船隻接送 來往西貢碼頭及魚排 Contact licensee via phone to arrange transportation to and from Sai Kung Pier.	9056 3632	24小時開放，年中無休。 Opens 24/7, all year round.
39	鄭天送 CHENG TIN SUNG (LN 2019)	大頭洲 Tai Tau Chau	聯絡持牌人安排船隻接送 來往西貢碼頭及魚排 Contact licensee via phone to arrange transportation to and from Sai Kung Pier.	9056 3632	24小時開放，年中無休。 Opens 24/7, all year round.

所有海魚休閒魚排皆需要預約 Reservations are required to visit leisure mariculture rafts



"Fish enJoy" Scheme
「漁+樂」魚場計劃



「漁+樂」魚場名單

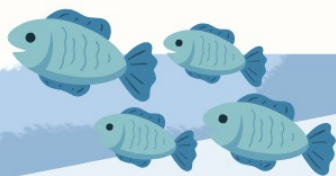
List of "Fish enjoy" Fish Farms

(截至 As at 30/4/2026)

海魚休閒魚排

	牌照持有人及 牌照編號 Licensee name and Licence number	魚類養殖區 Fish Culture Zone	交通安排 Transportation Arrangement	聯絡電話 Contact No.	開放時間 Opening Hours
40	冠信環球有限公司 CONCEPT GLOBAL LIMITED (LN 5301)	鹽田仔(東部) Yim Tin Tsai (East)	聯絡持牌人安排船隻接送 來往三門仔聯益碼頭及魚 排 Contact licensee via phone to arrange transportation to and from Luen Yick Ferry Pier.	9803 8031	全年開放(包括公眾假期)。開放時 間為上午9時至下午5時。 Opens all year round (including public holidays). Opens from 9am - 5pm, on business days.
41	何成光 HO SHING KONG (LN 1502)	鹽田仔(東部) Yim Tin Tsai (East)	聯絡持牌人安排船隻接送 來往三門仔聯益碼頭及魚 排 Contact licensee via phone to arrange transportation to and from Luen Yick Ferry Pier.	9444 7939	全年開放(包括公眾假期)。開放時 間為上午8時至下午6時。 Opens all year round (including public holidays). Opens from 8am - 6pm, on business days.
42	梁國柱 LEUNG KWOK CHU (LN 4042)	榕樹凹 Yung Shue Au	聯絡持牌人安排船隻接送 來往井頭碼頭及魚排 Contact licensee via phone to arrange transportation to and from Tseng Tau Pier.	9288 8650	24小時開放, 年中無休。 Opens 24/7, all year round.

所有海魚休閒魚排皆需要預約 Reservations are required to visit leisure mariculture rafts



"Fish enjoy" Scheme
「漁+樂」魚場計劃



「漁+樂」魚場名單

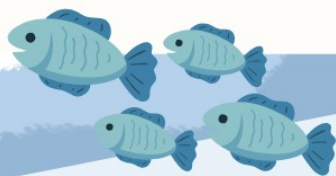
List of "Fish enjoy" Fish Farms

(截至 As at 30/4/2026)

海魚休閒魚排

	牌照持有人及 牌照編號 Licensee name and Licence number	魚類養殖區 Fish Culture Zone	交通安排 Transportation Arrangement	聯絡電話 Contact No.	開放時間 Opening Hours
43	陳俊傑 CHAN CHUN KIT (LN 5150)	榕樹凹 Yung Shue Au	聯絡持牌人安排船隻接送 來往井頭碼頭及魚排 Contact licensee via phone to arrange transportation to and from Tseng Tau Pier.	9377 1167	全年開放（包括公眾假期）。開放時 間為上午9時至下午8時。 Opens all year round (including public holidays). Opens from 9am - 8pm, on business days.
44	智環國際有限公司 LOOPER INTERNA- TIONAL COMPANY LIMITED (LN 5368)	榕樹凹 Yung Shue Au	聯絡持牌人安排船隻接送 來往井頭碼頭及魚排 Contact licensee via phone to arrange transportation to and from Tseng Tau Pier.	9211 0439	全年開放（包括公眾假期）。開放時 間為上午10時至下午6時。 Opens all year round (including public holidays). Opens from 10am - 6pm, on business days.
45	(LN 4993)	榕樹凹 Yung Shue Au	魚場未有透露相關資訊， 遊客需個別聯絡魚場查詢 交通安排 Information were not dis- closed, visitors need to contact the fish farm individually to inquire about transportation arrangement.	2437 5135	魚場未有透露相關資訊，遊客需個別 聯絡魚場查詢開放時間 Information were not disclosed, visitors need to contact the fish farm individually to inquire about opening hours.

所有海魚休閒魚排皆需要預約 Reservations are required to visit leisure mariculture rafts



"Fish enjoy" Scheme
「漁+樂」魚場計劃



「漁+樂」魚場名單

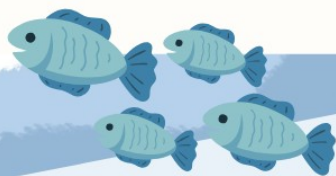
List of "Fish enjoy" Fish Farms

(截至 As at 30/4/2026)

海魚休閒魚排

	牌照持有人及 牌照編號 Licensee name and Licence number	魚類養殖區 Fish Culture Zone	交通安排 Transportation Arrangement	聯絡電話 Contact No.	開放時間 Opening Hours
46	(LN 4621)	榕樹凹 Yung Shue Au	魚場未有透露相關資訊， 遊客需個別聯絡魚場查詢 交通安排 Information were not dis- closed, visitors need to contact the fish farm individually to inquire about transportation arrangement.	9461 1148	魚場未有透露相關資訊，遊客需個別 聯絡魚場查詢開放時間。 Information were not disclosed, visitors need to contact the fish farm individually to inquire about opening hours.
47	羅群芳 LO KWAN FONG (LN 4779)	鹽田仔 Yim Tin Tsai	聯絡持牌人安排船隻接送 來往三門仔漁安街碼頭及 魚排 Contact licensee via phone to arrange transportation to and from Yu On Street Pier, Sam Mun Tsai	9832 2119	24小時開放，年中無休。 Opens 24/7, all year round.
48	佳明集團有限公司 GRANDMAN HOLD- INGS LIMITED (LN 5066)	麻南笏 Ma Nam Wat	聯絡持牌人安排船隻接送 來往白沙灣碼頭及魚排 Contact licensee via phone to arrange transportation to and from Pak Sha Wan Pier	2207 3117/ 9759 7564	逢星期日休息（不包括公眾假期）。 遊客需個別聯絡魚場查詢開放時間。 Closed on Sunday (excluding public holi- days). Visitors need to contact the fish farm individually to inquire about opening hours.

所有海魚休閒魚排皆需要預約 Reservations are required to visit leisure mariculture rafts



"Fish enjoy" Scheme
「漁+樂」魚場計劃



「漁+樂」魚場名單

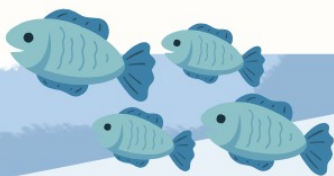
List of "Fish enjoy" Fish Farms

(截至 As at 30/4/2026)

海魚休閒魚排

	牌照持有人及 牌照編號 Licensee name and Licence number	魚類養殖區 Fish Culture Zone	交通安排 Transportation Arrangement	聯絡電話 Contact No.	開放時間 Opening Hours
49	冠騰國際有限公司 CHAMPION EAGLE INTERNATIONAL LIMITED (LN 5165)	深灣 Sham Wan	魚場未有透露相關資訊， 遊客需個別聯絡魚場查詢 交通安排 Information were not dis- closed, visitors need to contact the fish farm individually to inquire about transportation arrangement.	5360 6211	全年開放（包括公眾假期）。開放時 間為上午10時至下午6時。 Opens all year round (including public holidays). Opens from 10am - 6pm, on business days.
50	嚴志東 YIM CHI TUNG IAN (LN 5161)	榕樹凹 Yung Shue Au	聯絡持牌人安排船隻接送 來往榕樹凹碼頭及魚排 Contact licensee via phone to arrange transportation to and from Yung Shue Au Pier.	9202 6496	全年開放（不包括公眾假期）。開放 時間為上午10時至下午10時。 Opens all year round (excluding public holidays). Opens from 10am - 10pm, on business days.
51	吳家樂 NG KA LOK (LN 5540)	榕樹凹 Yung Shue Au	聯絡持牌人安排船隻接送 來往榕樹凹碼頭及魚排 Contact licensee via phone to arrange transportation to and from Yung Shue Au Pier.	9782 1206	逢星期六日休息（不包括公眾假 期）。平日開放時間為中午12時至下 午7時。公眾假期開放時間為上午10 時30分至下午5時。 Closed on weekends (excluding public holidays). Opens from 12pm - 7pm week- days, and from 1030am - 5pm on public holidays.

所有海魚休閒魚排皆需要預約 Reservations are required to visit leisure mariculture rafts



"Fish enjoy" Scheme
「漁+樂」魚場計劃



「漁+樂」魚場名單

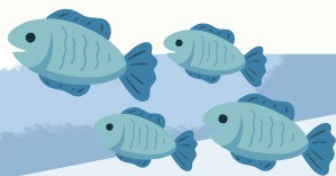
List of "Fish enjoy" Fish Farms

(截至 As at 30/4/2026)

海魚休閒魚排

	牌照持有人及 牌照編號 Licensee name and Licence number	魚類養殖區 Fish Culture Zone	交通安排 Transportation Arrangement	聯絡電話 Contact No.	開放時間 Opening Hours
52	迅達行運輸貿易有限公司 SCHINDLER LINE TRANSPORT AND TRADING COMPANY LTD. (LN 5555)	榕樹凹 Yung Shue Au	聯絡持牌人安排船隻接送 來往井頭碼頭及魚排 Contact licensee via phone to arrange transportation to and from Tseng Tau Pier.	5571 3823	全年開放（不包括公眾假期）。開放 時間為上午8時至下午8時。 Opens all year round (excluding public holidays). Opens from 8am - 8pm, on business days.
53	蘇良財 SO LEUNG CHOI (LN 5331)	鹽田仔(東部) Yim Tin Tsai (East)	聯絡持牌人安排船隻接送 來往三門仔聯益碼頭及魚 排 Contact licensee via phone to arrange transportation to and from Luen Yick Ferry Pier.	9035 3865	全年開放（包括公眾假期）。開放時 間為上午8時至下午7時。 Opens all year round (including public holidays). Opens from 8am - 7pm, on business days.
54	劉雪怡 LAU SUET YEE (LN 5306)	鹽田仔 Yim Tin Tsai	聯絡持牌人安排船隻接送 來往三門仔漁安街碼頭及 魚排 Contact licensee via phone to arrange transportation to and from Yu On Street Pier, Sam Mun Tsai	6158 6156	全年開放（包括公眾假期）。開放時 間為上午8時至下午11時。 Opens all year round (including public holidays). Opens from 8am - 11pm, on business days.

所有海魚休閒魚排皆需要預約 Reservations are required to visit leisure mariculture rafts



"Fish enjoy" Scheme
「漁+樂」魚場計劃



「漁+樂」魚場名單

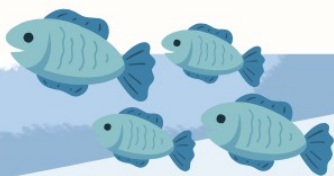
List of "Fish enjoy" Fish Farms

(截至 As at 30/4/2026)

海魚休閒魚排

	牌照持有人及 牌照編號 Licensee name and Licence number	魚類養殖區 Fish Culture Zone	交通安排 Transportation Arrangement	聯絡電話 Contact No.	開放時間 Opening Hours
55	麗基國際有限公司 BEAUTIGREAT INT' L LTD (LN 4826)	湓西 Kau Sai	聯絡持牌人安排船隻接送 來往西貢碼頭及魚排 Contact licensee via phone to arrange transportation to and from Sai Kung Pier.	3708 1829	逢星期日休息（不包括公眾假期）。 平日開放時間為上午11時至下午8 時。公眾假期開放時間為上午10時至 下午8時。 Closed on Sunday (excluding public holi- days). Opens from 11am - 8pm weekdays, and from 10am - 8pm on public holidays.
56	徐珀浩 TSUI PAK HO RUSSELL (LN 5123)	麻南笏 Ma Nam Wat	聯絡持牌人安排船隻接送 來往白沙灣碼頭及魚排 Contact licensee via phone to arrange transportation to and from Pak Sha Wan Pier	6086 1108	24小時開放，年中無休。 Opens 24/7, all year round.
57	曾偉香 TSANG WAI HEUNG (LN 5038)	鹽田仔(東部) Yim Tin Tsai (East)	聯絡持牌人安排船隻接送 來往三門仔聯益碼頭及魚 排 Contact licensee via phone to arrange transportation to and from Luen Yick Ferry Pier.	6543 6762	全年開放（包括公眾假期）。開放時 間為上午8時至凌晨0時。 Opens all year round (including public holidays). Opens from 8am to midnight, on business days.

所有海魚休閒魚排皆需要預約 Reservations are required to visit leisure mariculture rafts



"Fish enjoy" Scheme
「漁+樂」魚場計劃



「漁+樂」魚場名單

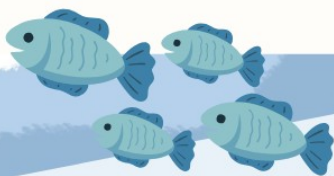
List of "Fish enjoy" Fish Farms

(截至 As at 30/4/2026)

海魚休閒魚排

	牌照持有人及 牌照編號 Licensee name and Licence number	魚類養殖區 Fish Culture Zone	交通安排 Transportation Arrangement	聯絡電話 Contact No.	開放時間 Opening Hours
58	姚芷鈴 YIU TSZ LING HELEN (LN 4875)	榕樹凹 Yung Shue Au	聯絡持牌人安排船隻接送 來往井頭碼頭及魚排 Contact licensee via phone to arrange transportation to and from Tseng Tau Pier.	9377 9327	全年開放（包括公眾假期）。開放時 間為上午9時至下午11時。 Opens all year round (including public holidays). Opens from 9am to 11pm, on business days.

所有海魚休閒魚排皆需要預約 Reservations are required to visit leisure mariculture rafts



"Fish enJoy" Scheme
「漁+樂」魚場計劃