

漁農自然護理署

九龍長沙灣道三零三號
長沙灣政府合署八樓



AGRICULTURE, FISHERIES &
CONSERVATION DEPARTMENT

Cheung Sha Wan Government Offices
8/F, Supplies Section,
303 Cheung Sha Wan Road,
Kowloon, Hong Kong

Tel : (852) 2150 7085
Fax : (852) 2152 0383
Our Ref.: () in AFCD/FIS/AES01/25

08 July 2025

To: All tenderers

Dear Sir / Madam,

Tender Ref.: AFCD/FIS/AES01/25
Invitation to Tender for the
Provision of Shipping, Deployment and Anchorage Services of High Density
Polyethylene Deep-sea Cages for Agriculture, Fisheries and Conservation Department
Addendum No. 1

This department is inviting tenders for the Provision of Provision of Shipping, Deployment and Anchorage Services of three (3) High Density Polyethylene Deep-sea Cages to our designated location within three (3) months from the contract date.

With reference to the above Tender, I wish to inform you that the supplementary information is appended as Appendix I and attached in the enclosure below.

The supplementary information (Appendix I) shall be appended to “Part 3A – Service Specification” in the Tender Document and it is attached in the enclosure (P.1-P.4) for your information and necessary action. Apart from above, all other terms and conditions shall remain unchanged.

Should you have any enquiry, please contact Mr. Brian YANG at telephone (852) 3468 3714. Thank you for your attention.

Yours faithfully,

(Dr. KWOK Chun-kit)
for Director of Agriculture, Fisheries & Conservation

Encl. (P.1-P.4)

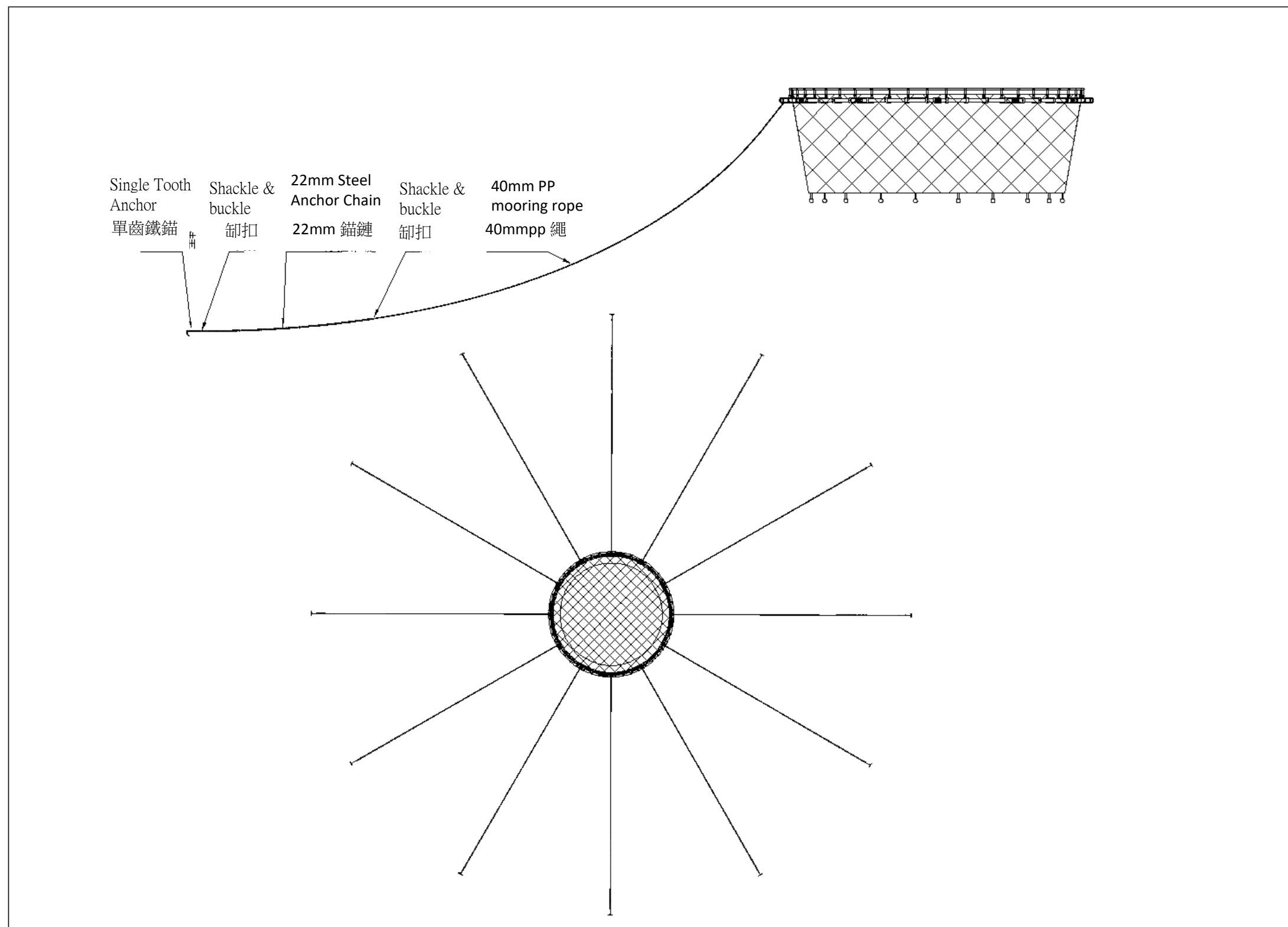


圖 9 HDPE C80 重力式深水網箱 12 等分錨系示意圖
HDPE C80, 12 Anchors Mooring System

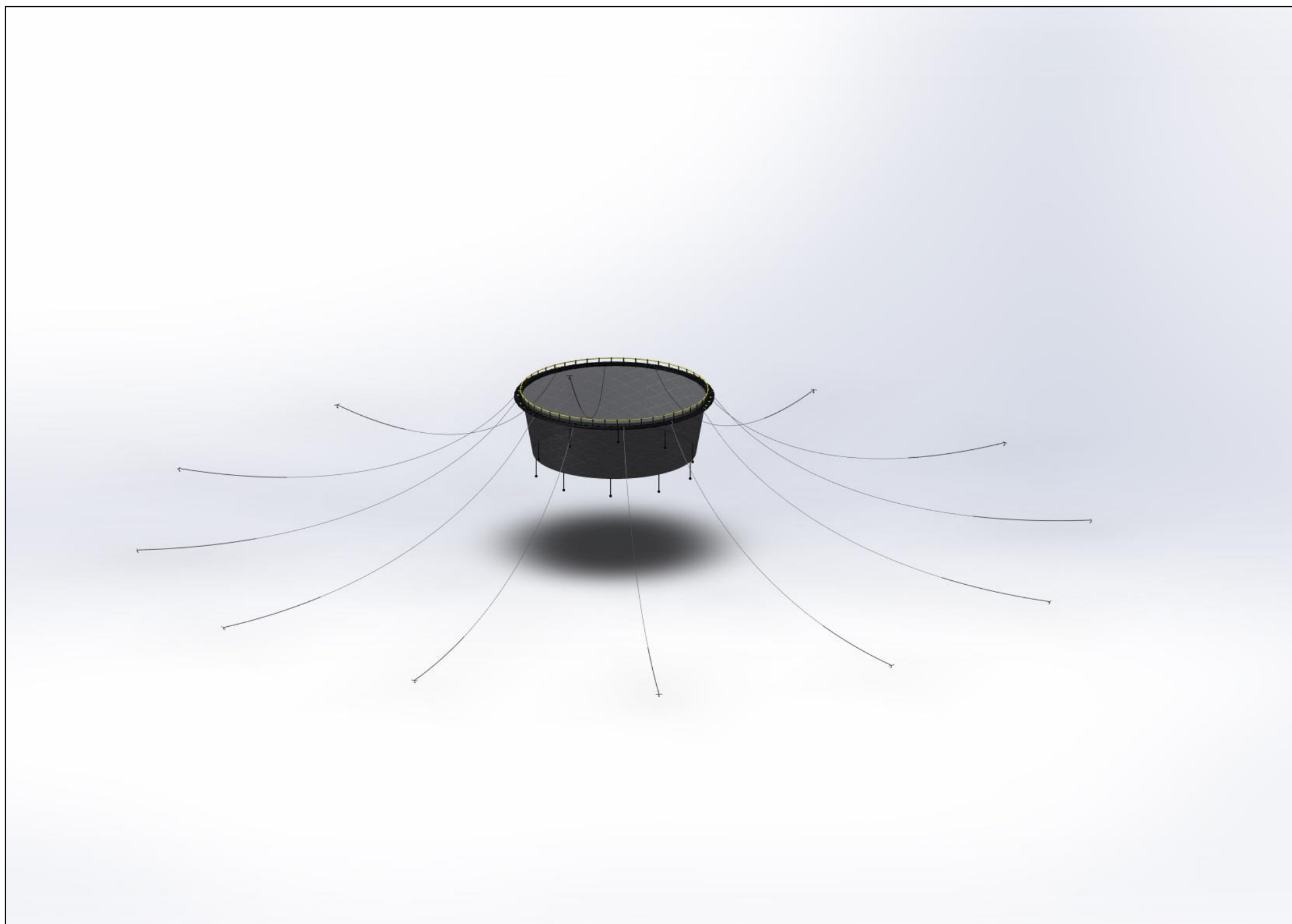


圖 10 HDPE C80 重力式深水網箱 12 等分錨系效果示意圖
HDPE C80, 12 Anchors Mooring System

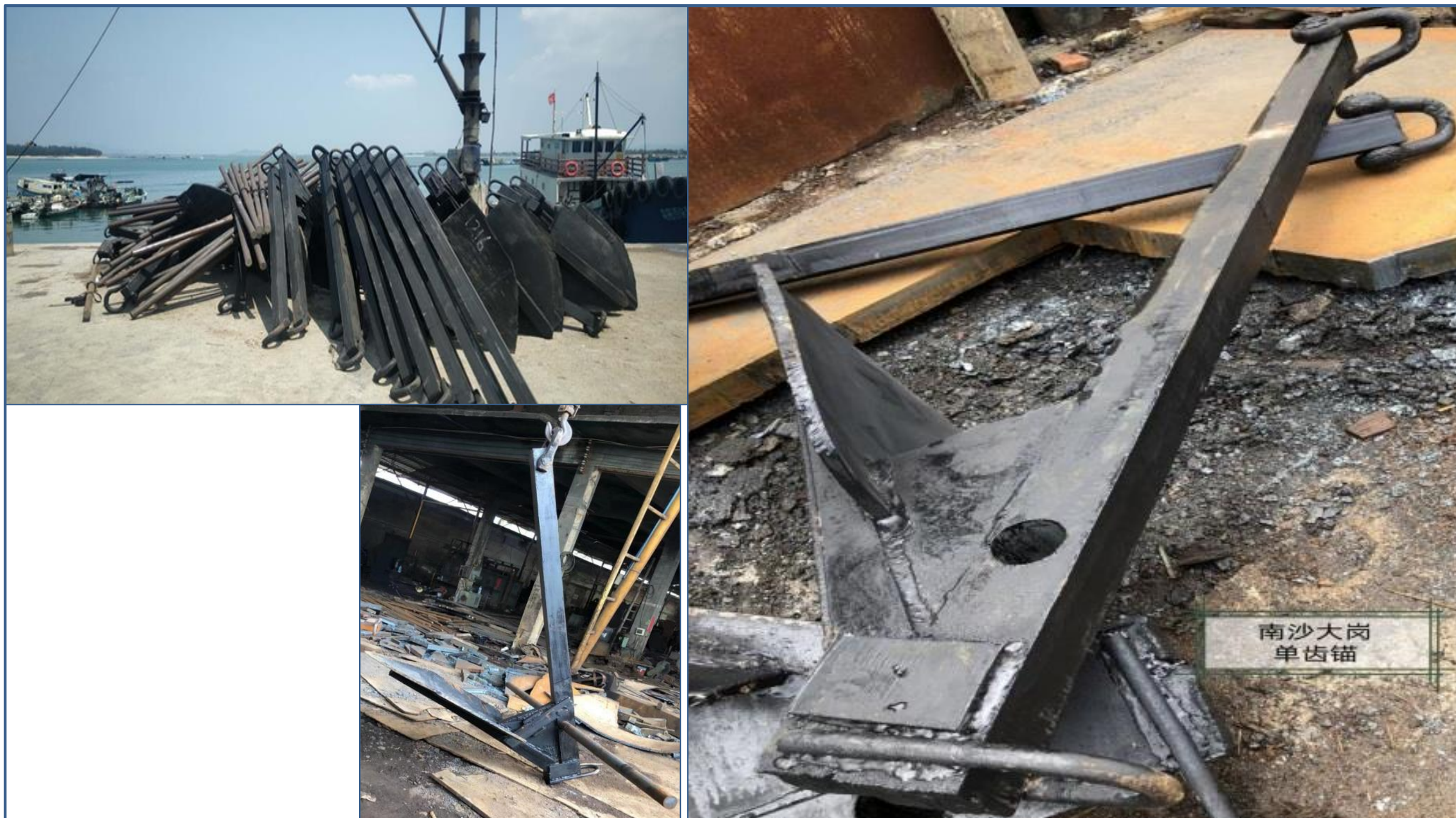


圖 23 HDPE C80/C100 網箱專用單齒寬頭錨（參考圖）
Pictures of Single Tooth Anchor

HDPE C80 重力式深水網箱系統主要技術參數（per cage）

1. 框架部分 Main structure					
序號	名稱 Name	規格相關描述 Specification	單位 Unit	數量 Quantity	備註 Remarks
1	主浮管 Main floating pipe	HDPE100/400 管、SDR13.6、純黑、厚 29.4mm	m	165	
2	扶手管 Handrail pipe	HDPE100/125 管、SDR11、黃色、厚 11.4mm	m	80	
3	扶手豎管 Stanchion pipe	HDPE100/140 管、SDR11、純黑、厚 12.7mm	m	25	淨高 760mmHeight
4	圓頭三通	PE Φ140×125、厚 12mm	個 Pcs	44	
2. 錨泊部分 Anchoring and Mooring					
序號	名稱 Name	規格相關描述 Specification	單位 Unit	數量 Quantity	備註 Remarks
1	單齒鐵錨 Single tooth anchor	650kg/個 kg/pc	個 Pcs	12	
2	錨鏈 Steel anchor chain	22mm×15m	條 Pcs	12	
3	卸扣 Shackle	M28、7.0T	個 Pcs	24	
4	角環	Φ40mm	個 Pcs	12	
5	錨繩（PP）Rope	Φ40mm×72m	條 Pcs	12	
6	錨繩壓砣	10kg /個 kg/pc	個 Pcs	12	

交收形式：深水網箱將會於海上交收

Delivery: In the water region of designated location